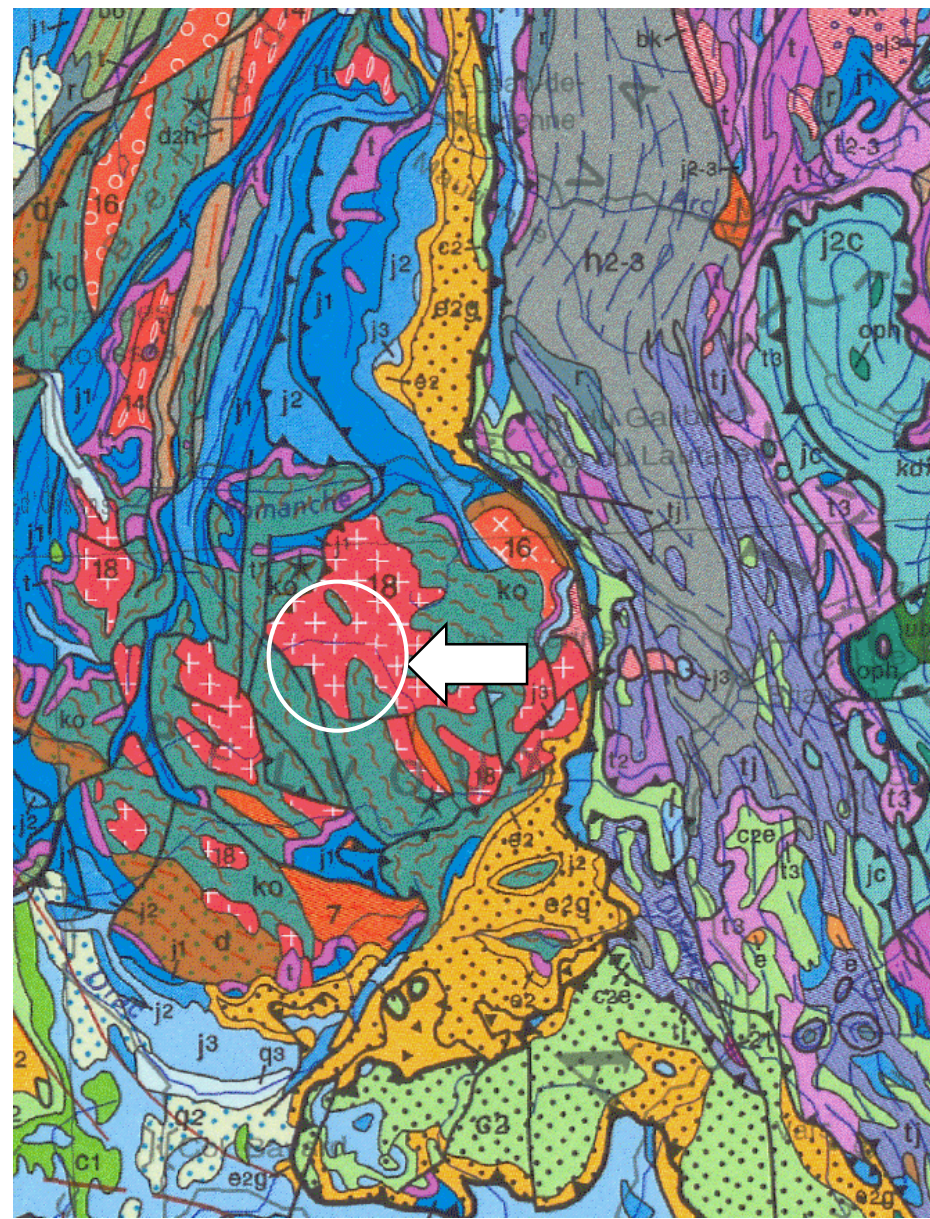
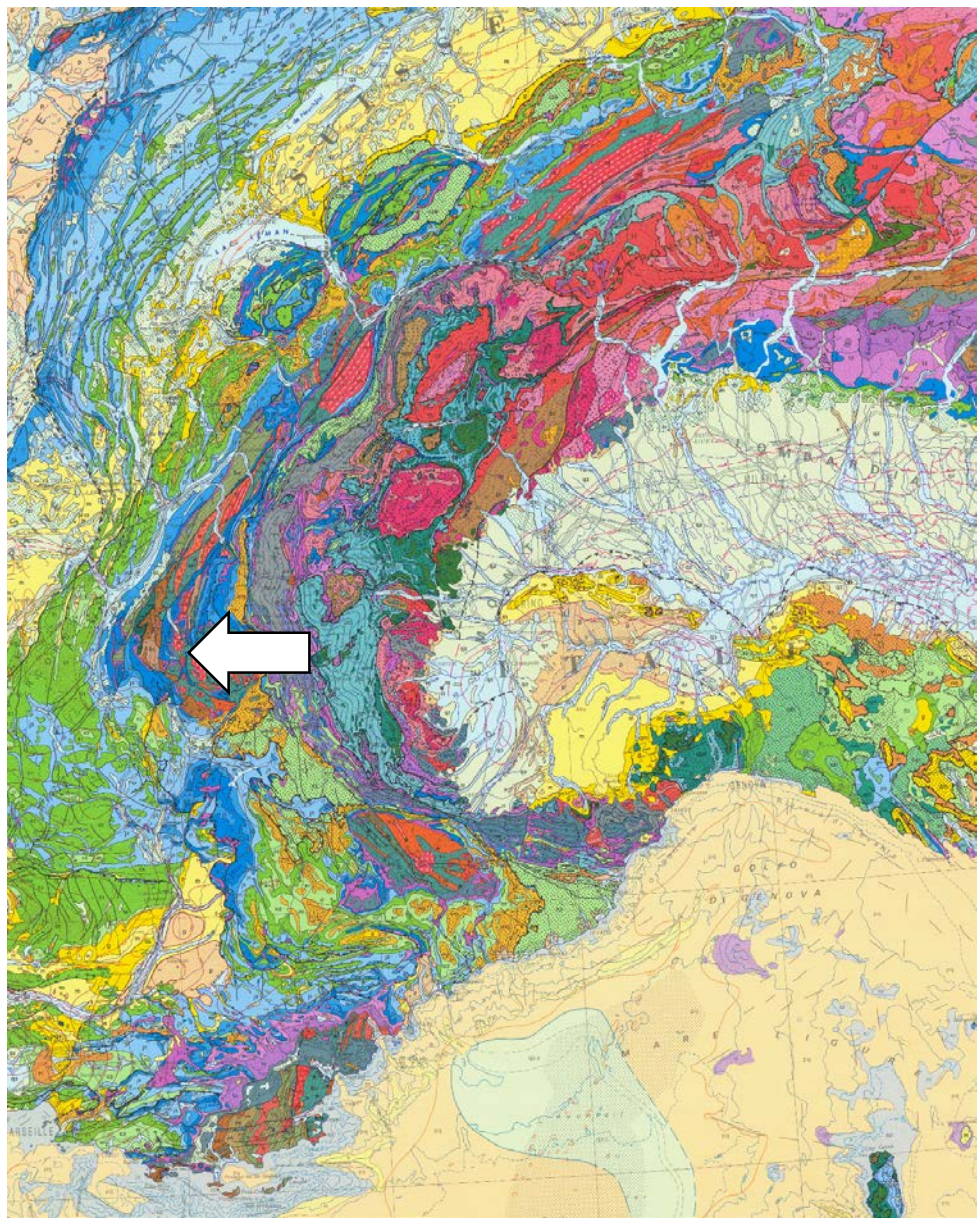
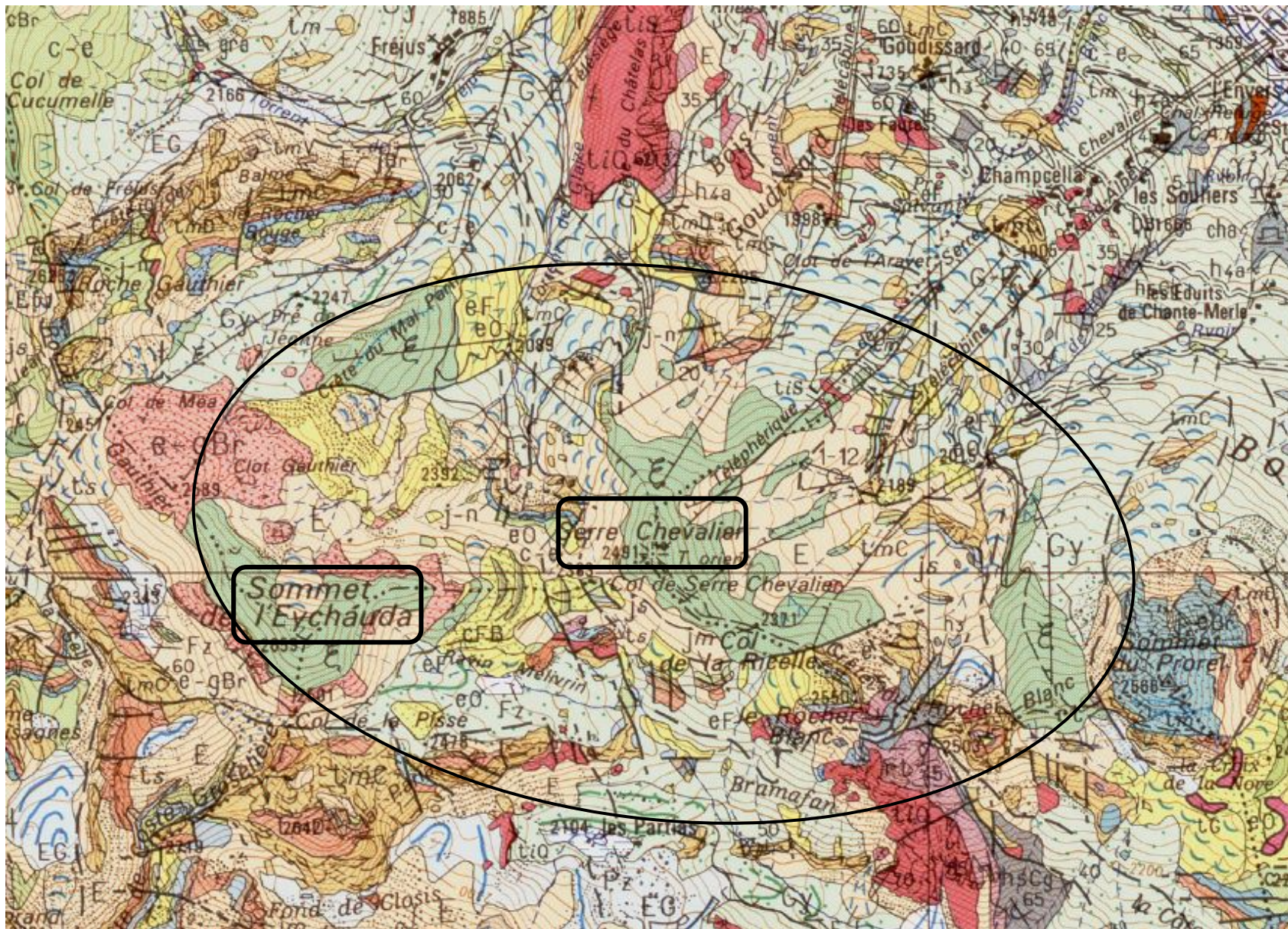


ÉVÉNEMENT CADOMIEN DANS LES ALPES OCCIDENTALES

Denis Thiéblemont, Philippe Lach, Catherine Guerrot
24 janvier 2020









Eychauda

Serre Chevalier



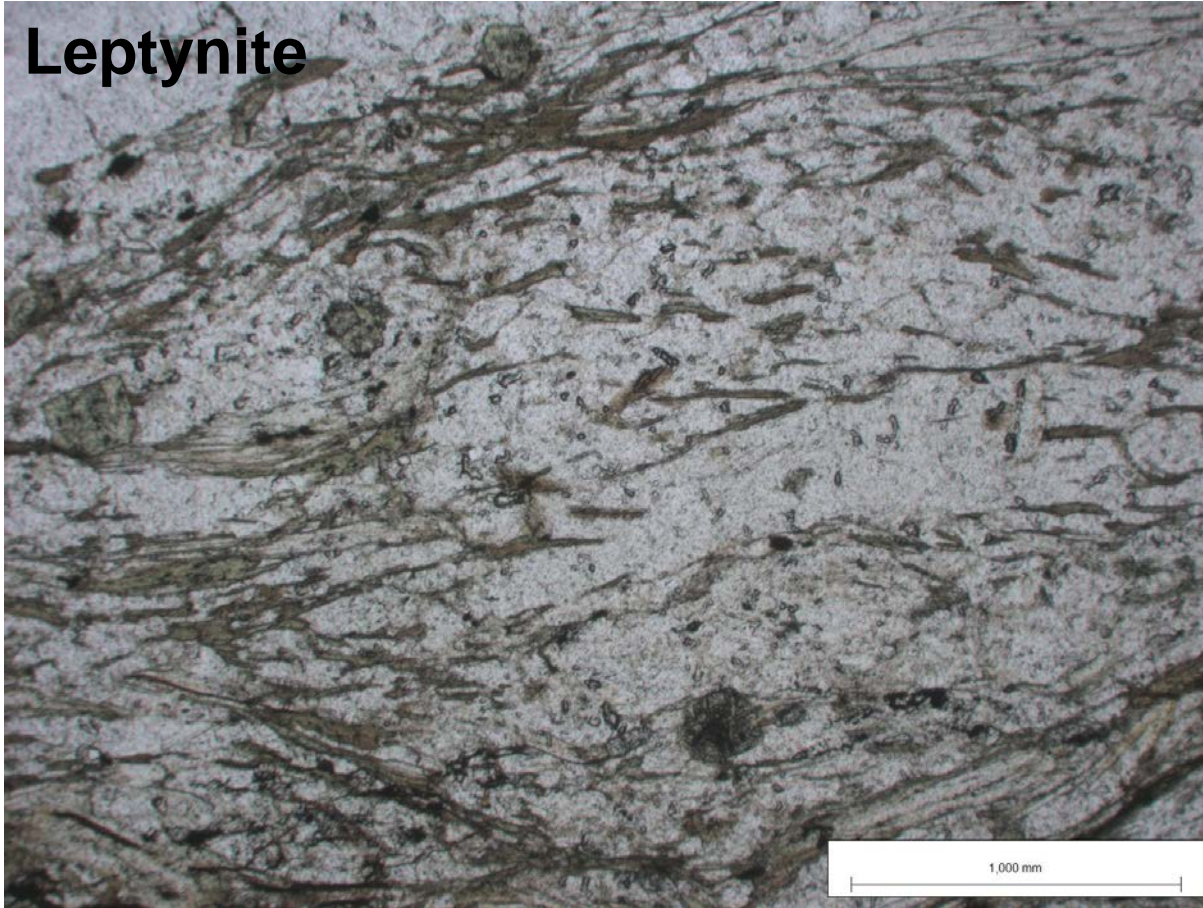
« Leptynites »



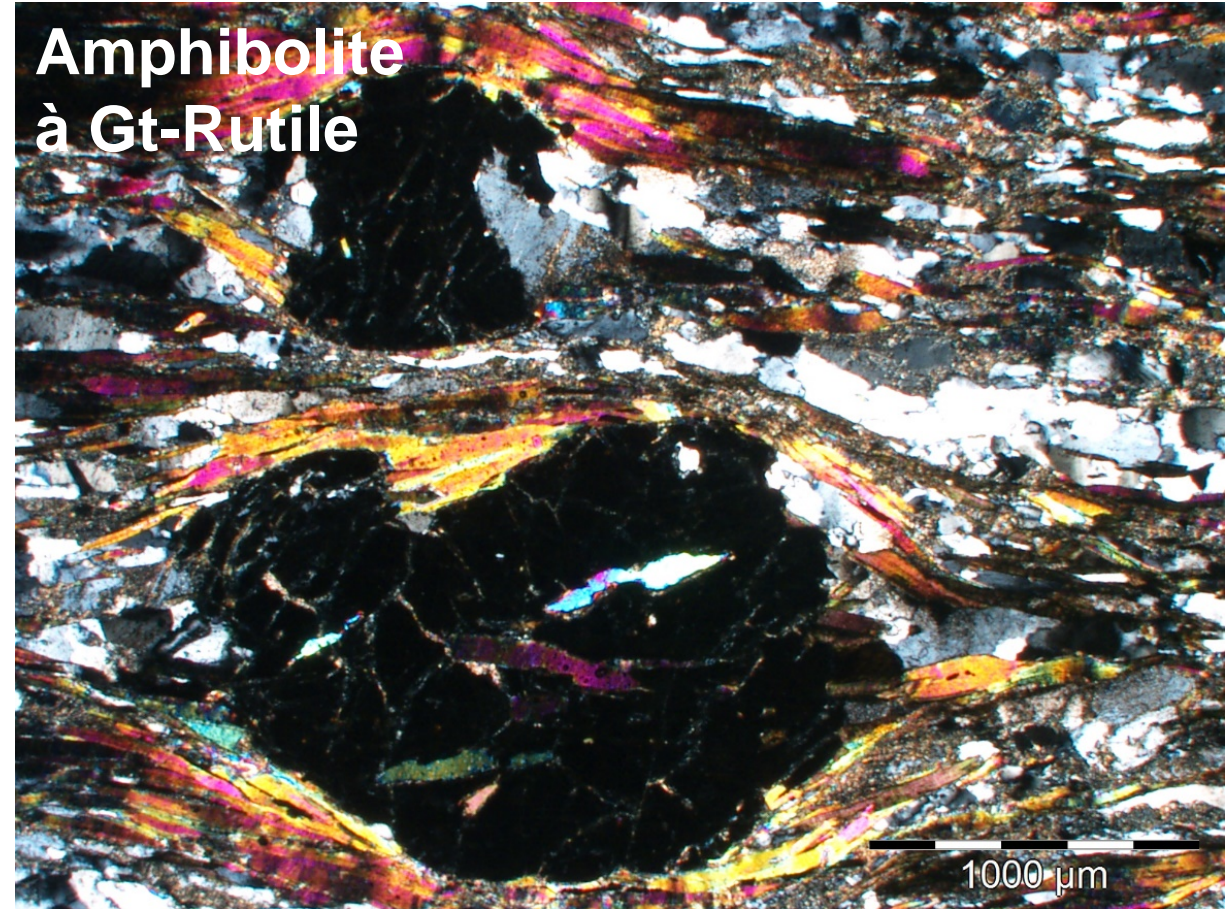
Amphibolite à Gt-Rutile

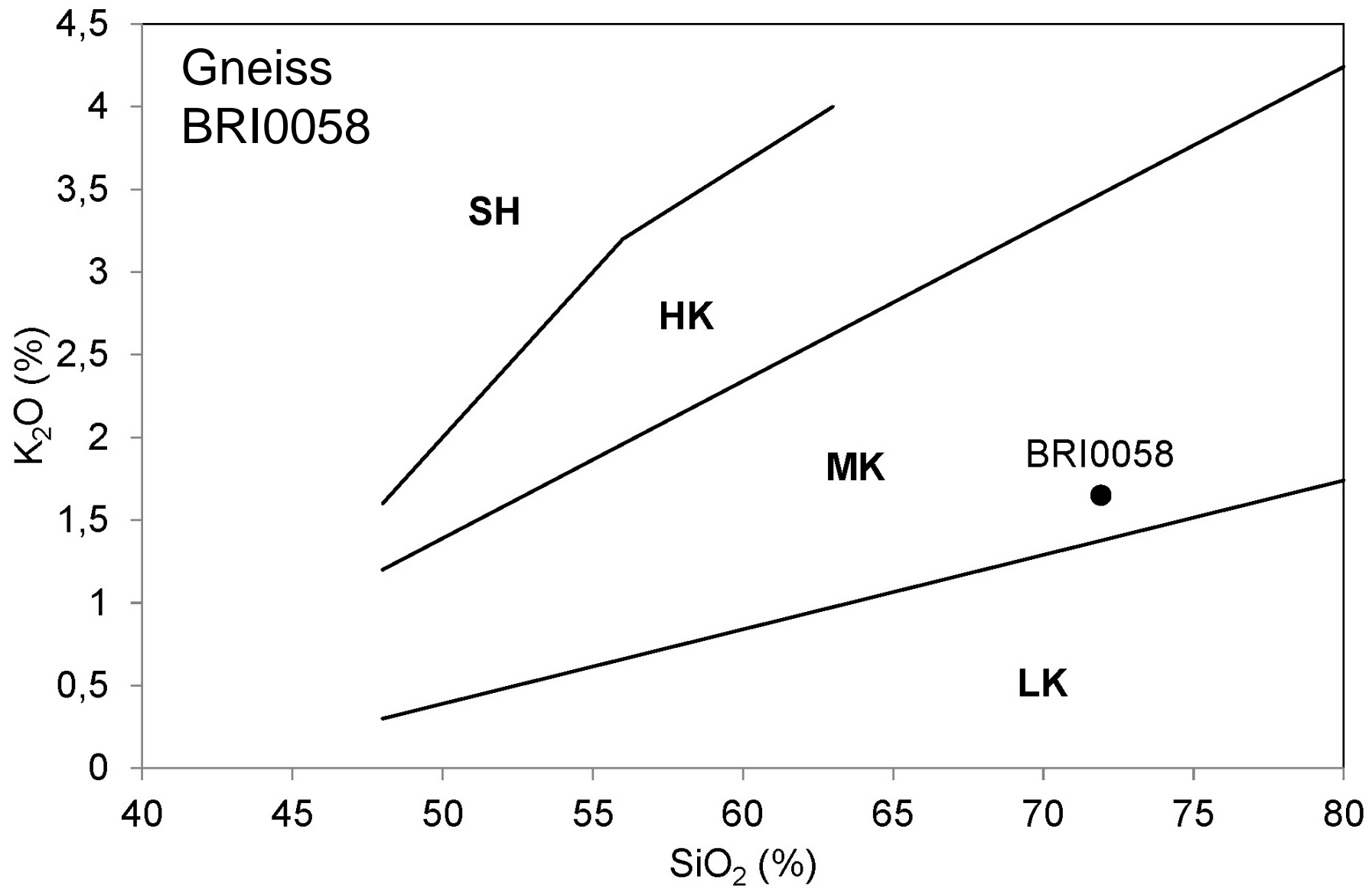
Gt

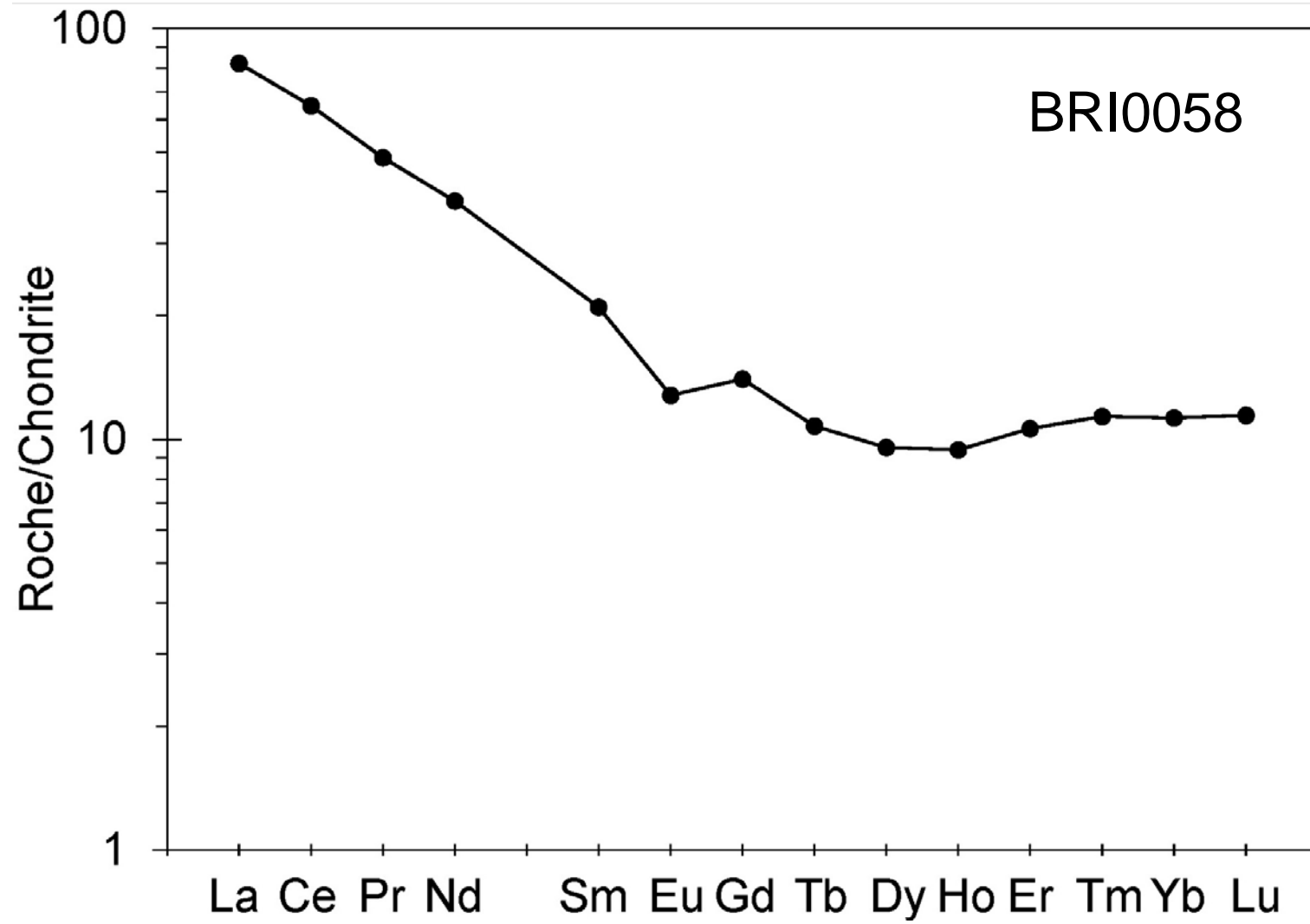
Leptynite

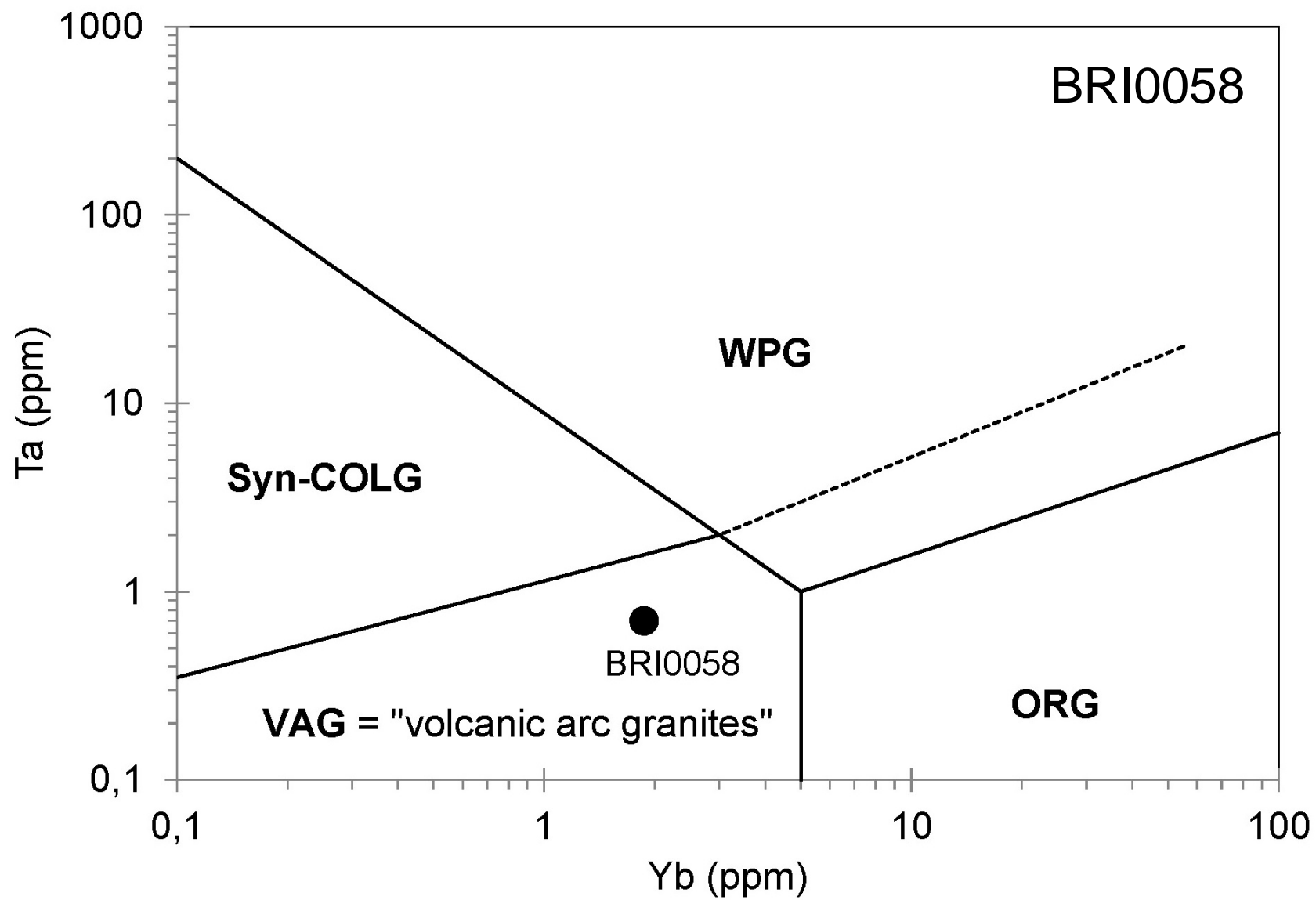


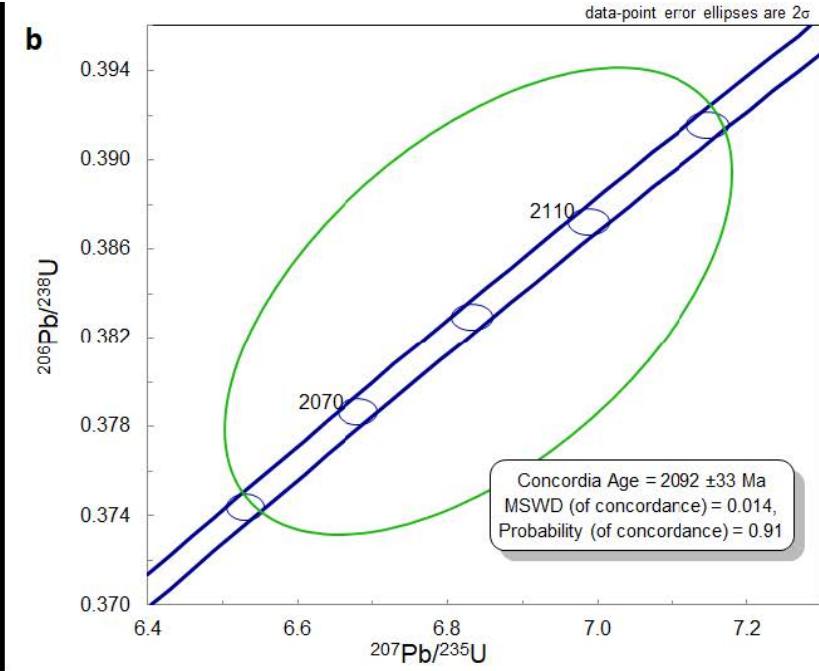
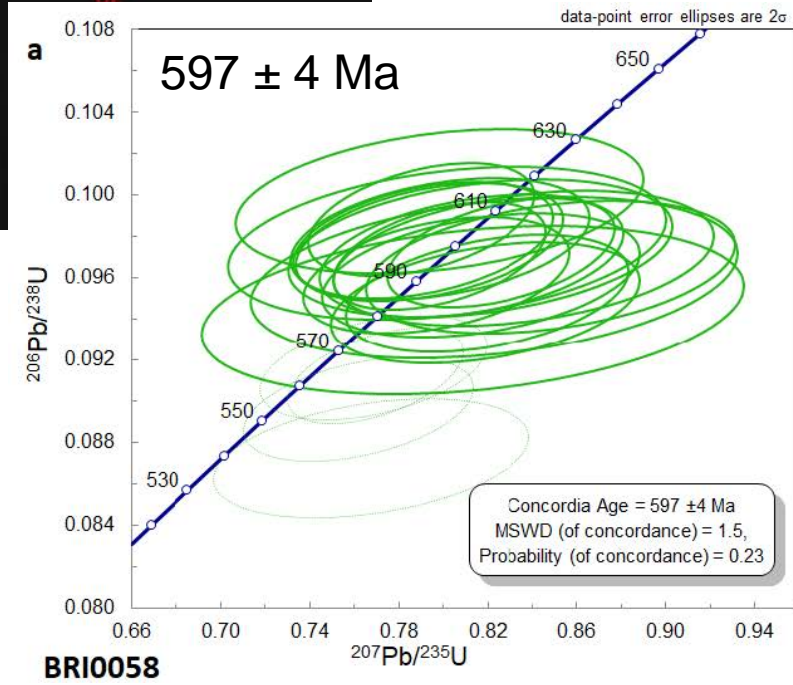
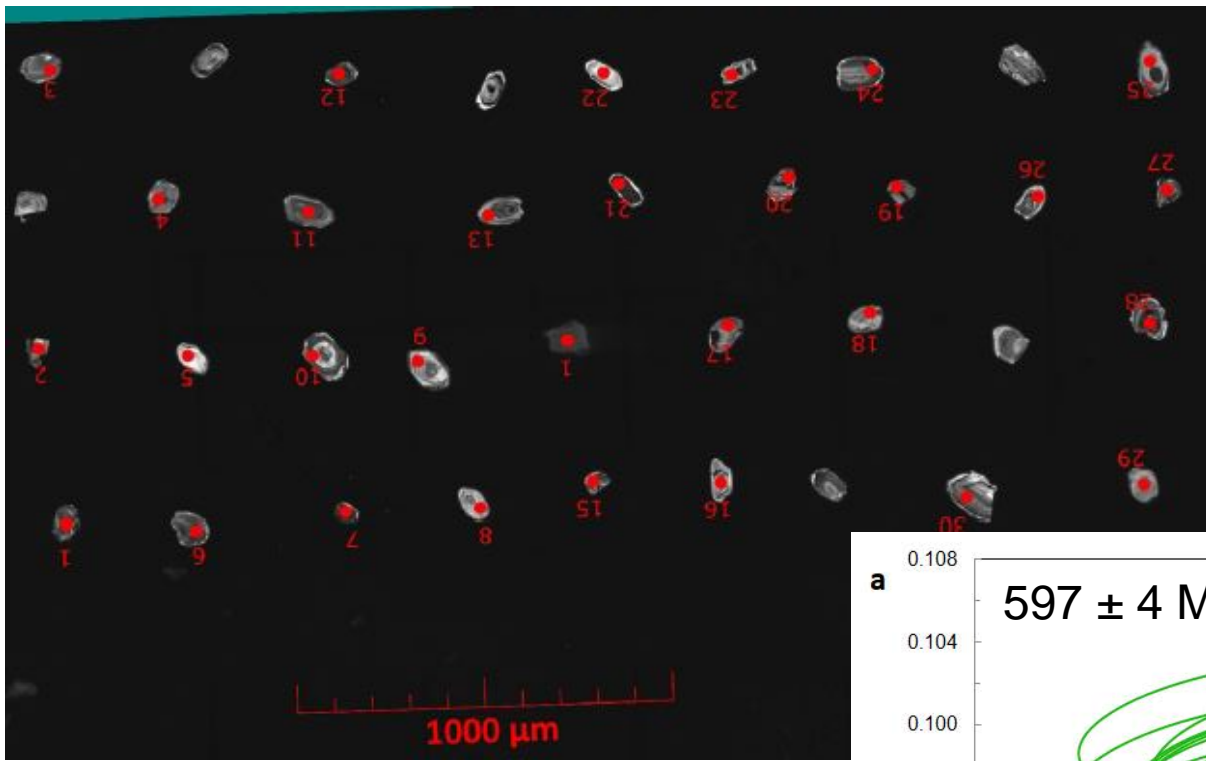
Amphibolite à Gt-Rutile



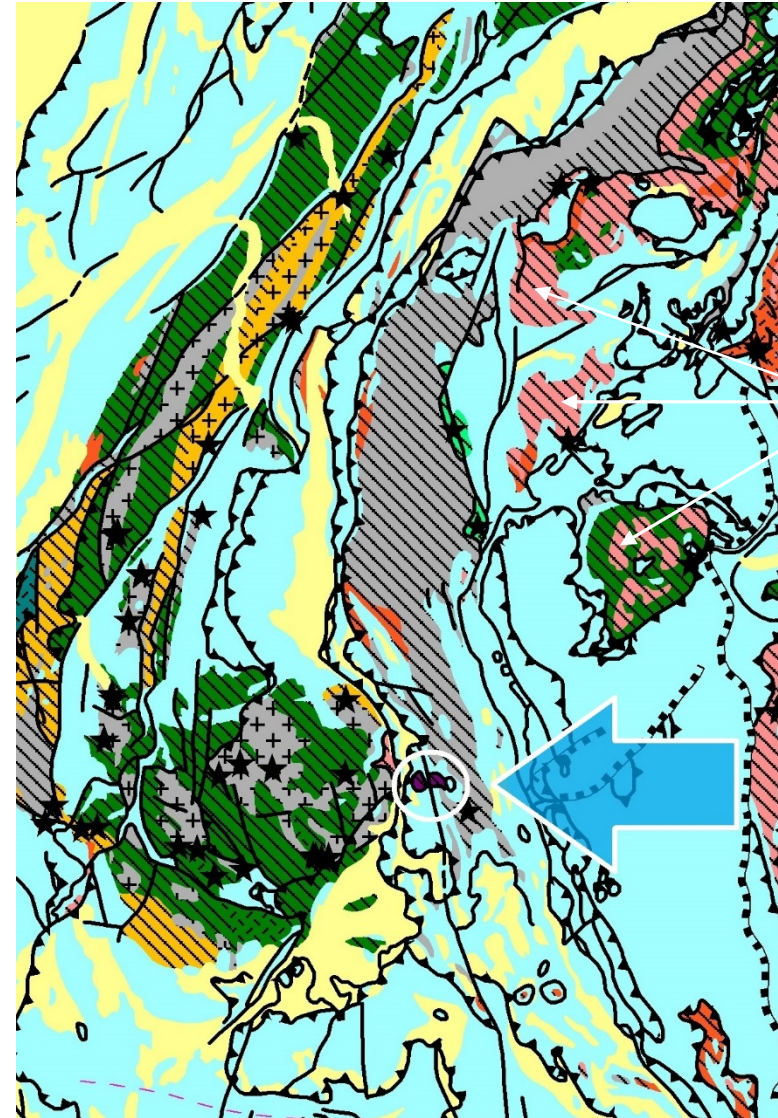
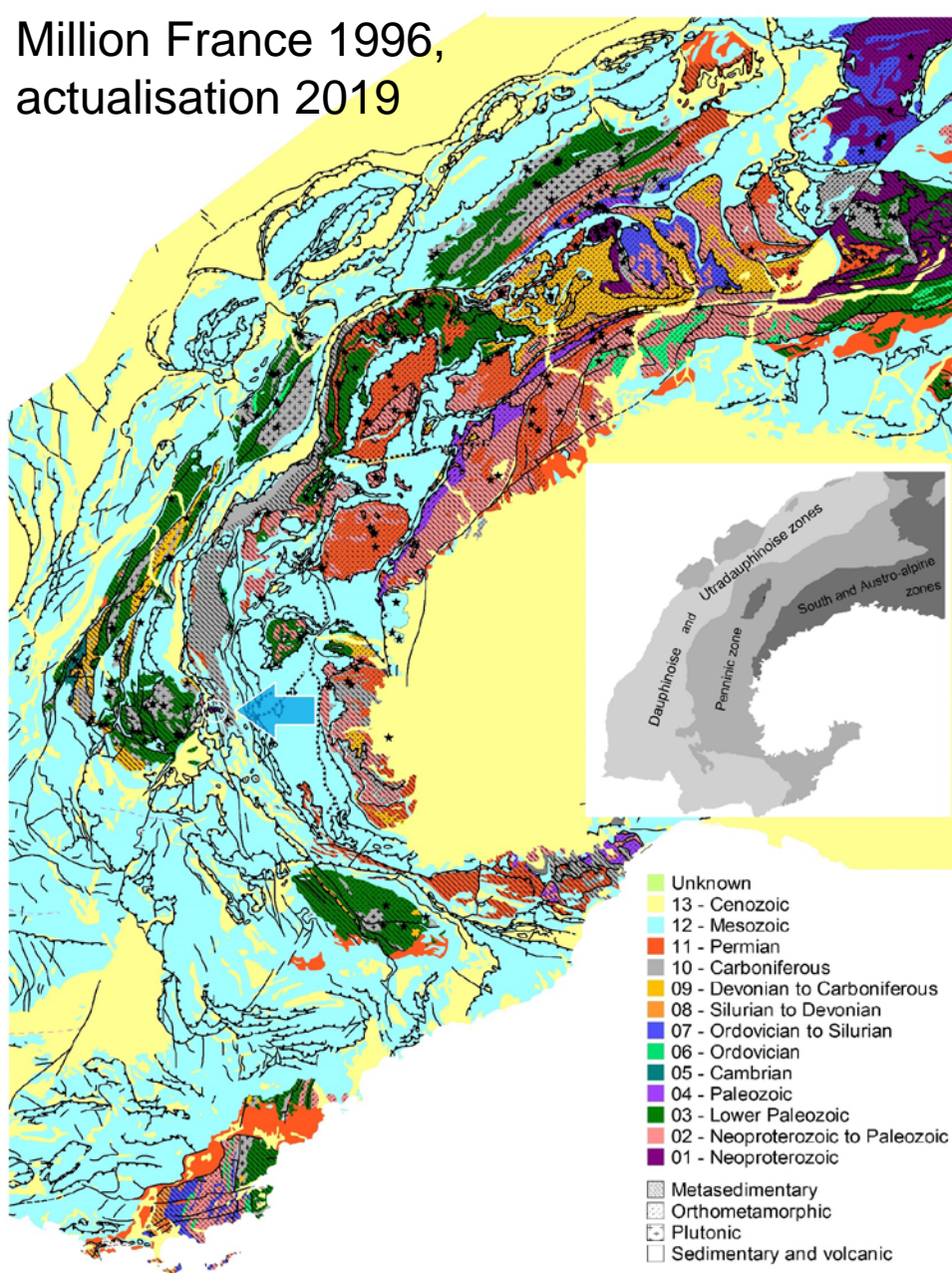








Million France 1996,
actualisation 2019



Socle des
MCI

A suivre

- Cartographie précise de la formation;
- Etude structurale et pétrométamorphique;
- Datation des niveaux conglomératiques (dont si possible éléments granitiques);
- Datation du métamorphisme
 - U/Pb sur rutile;
 - Sm/Nd minéraux-RT ?
- Comparaisons régionales :
 - Alpes;
 - Bretagne Nord (« Cadomien »_{SS}).