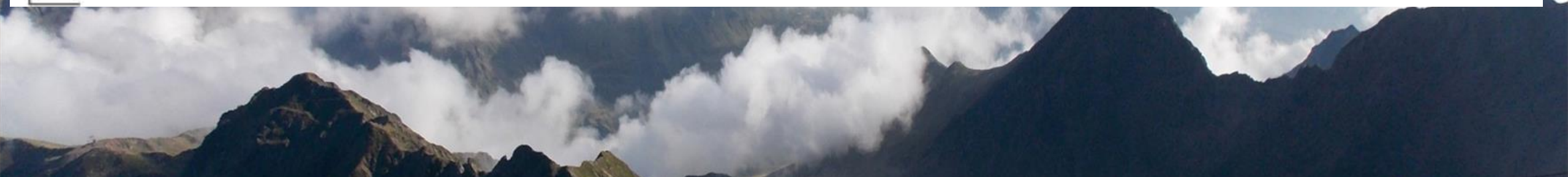
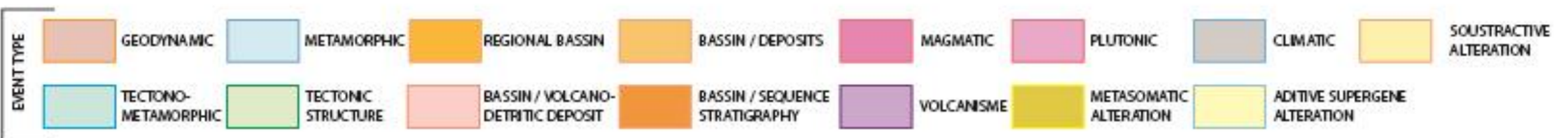
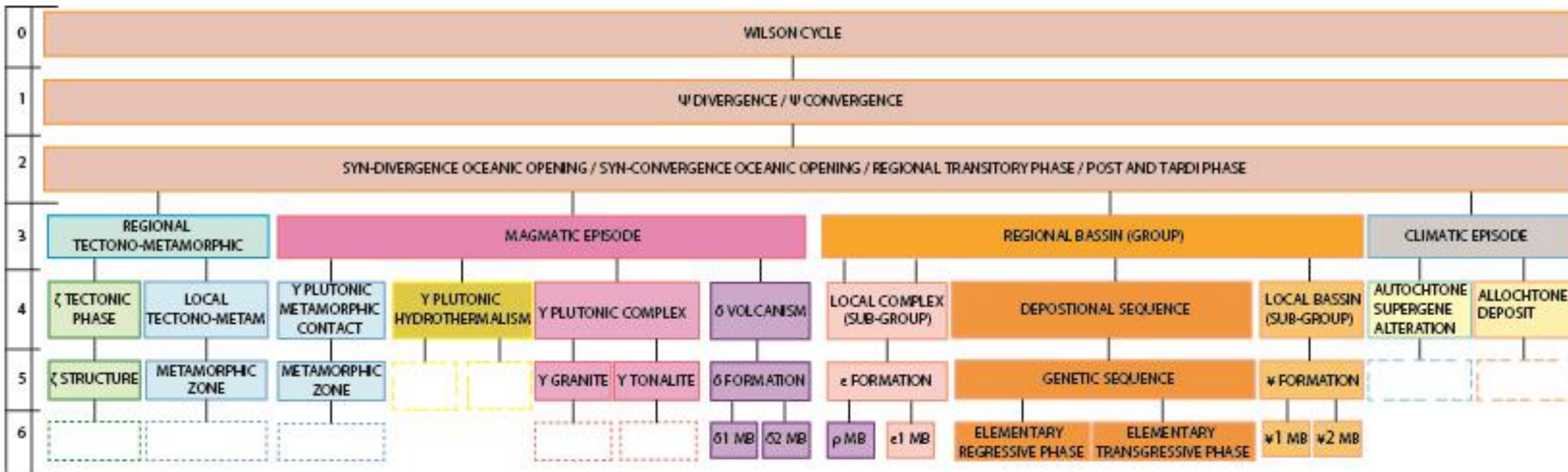
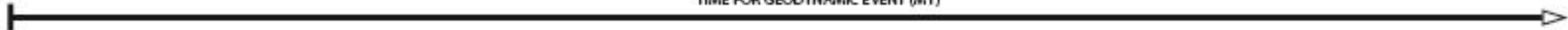


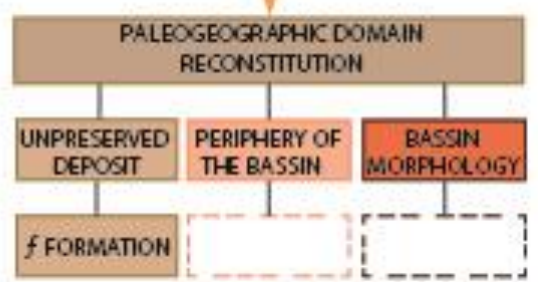
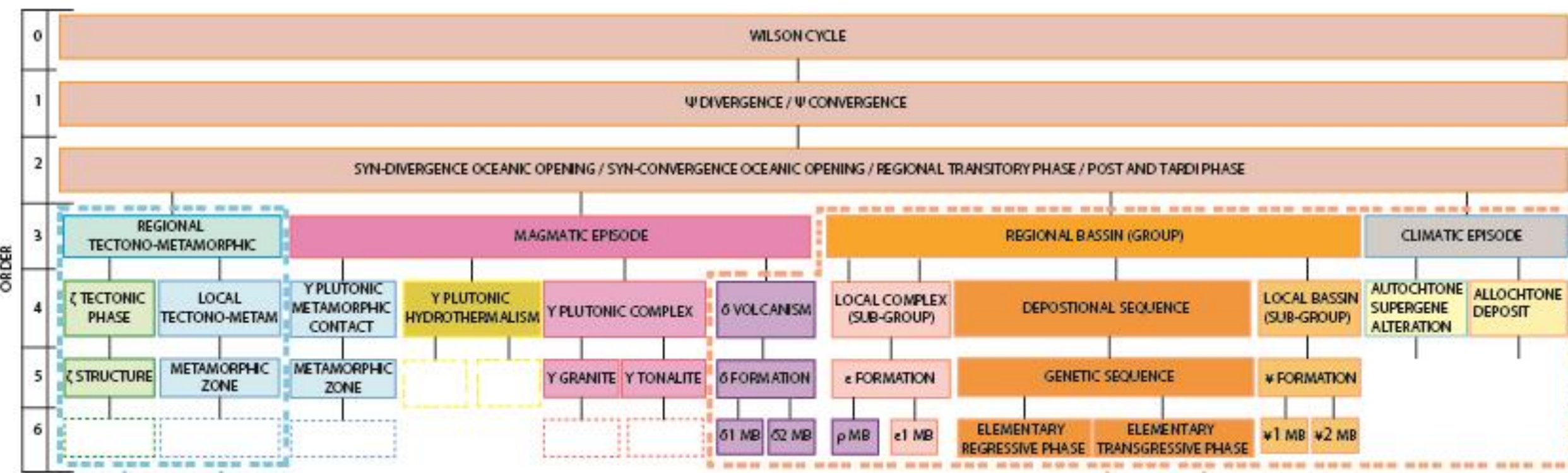
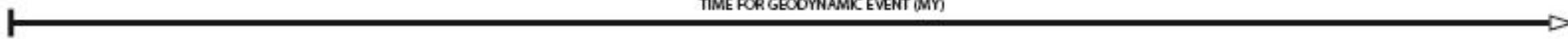
Introduction du principe de l'approche évènementielle



- **Tout objet « géologique » actuel, correspond à la somme (succession) de tous les évènements qu'il a subis depuis sa création jusqu'à nos jours (son histoire géologique...)**
- **Ces évènements sont reconnus par les traces qu'ils ont laissées dans la roche (chimiques ou structurales)**
- **Chaque évènement est calé dans le temps**
- **La genèse (formation) d'une roche est le premier Evènement (E0) qu'elle connaît**
- **Les évènements suivants qui se succèdent transforment l'objet jusqu'à nos jours**
- **Le nombre des évènements subis par une roche n'est pas limité**

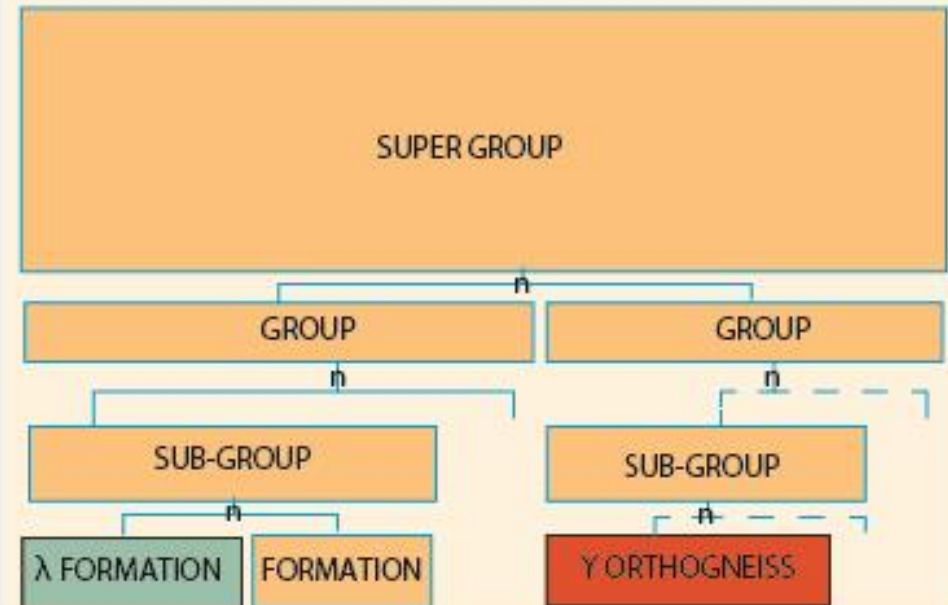
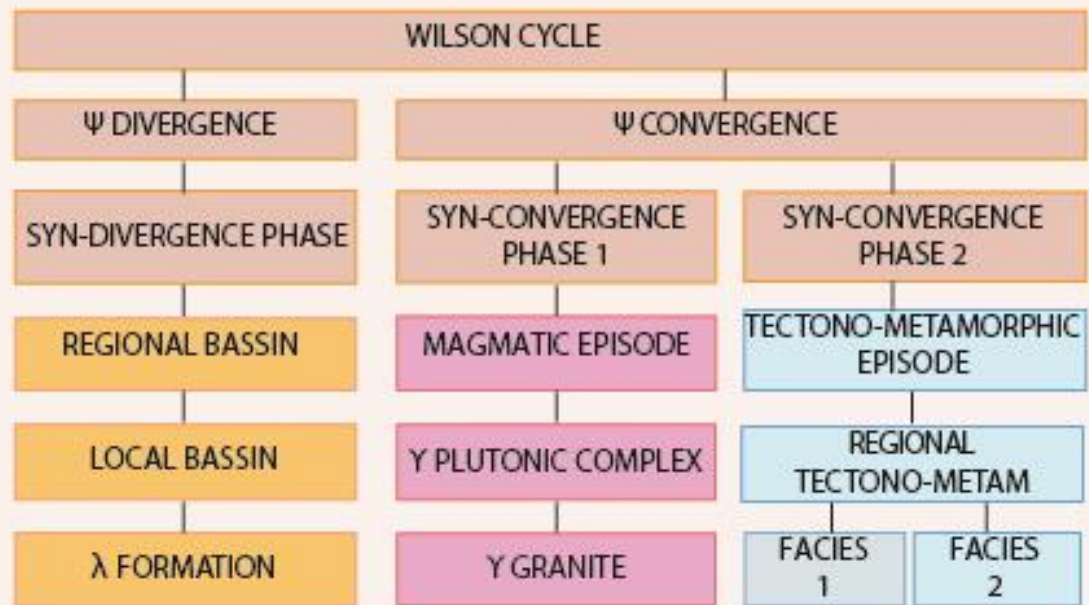
TIME FOR GEODYNAMIC EVENT (MY)





EVENT

LITHOSTRATIGRAPHIC

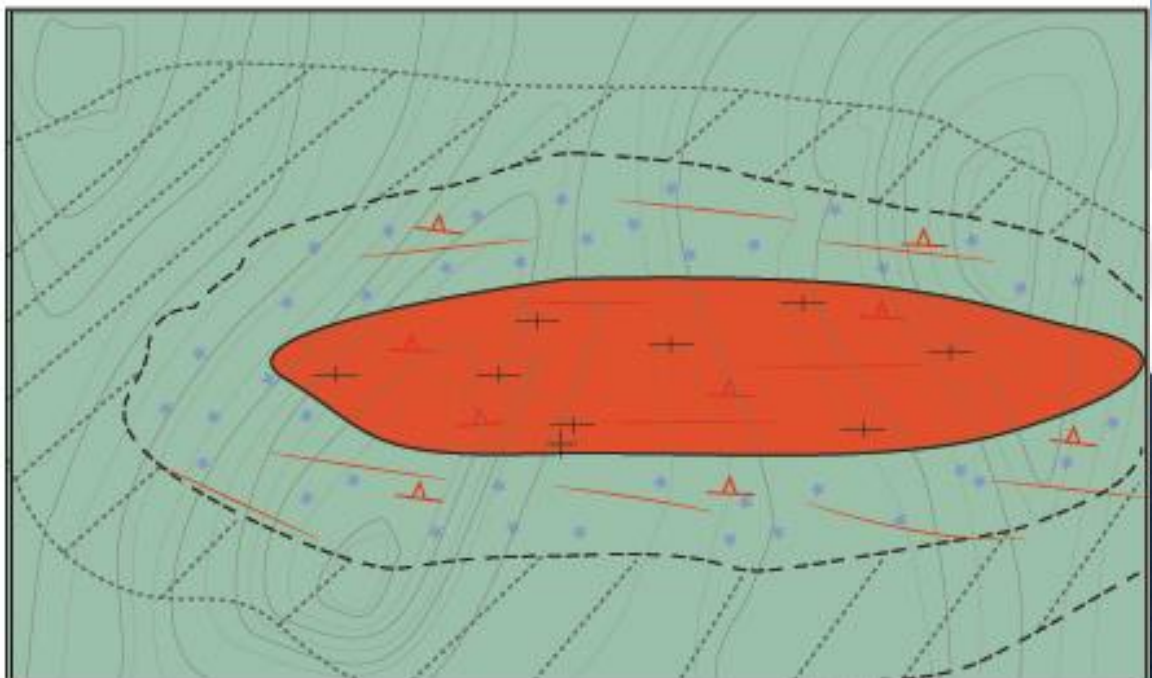


λ FORMATION

- E0 (dépôt)+E1 (Métam. Régional)
- E0 (dépôt)+E1 (Métam. Régional) facies 2
- E0 (dépôt)+E1 (Métam. Régional) facies 1

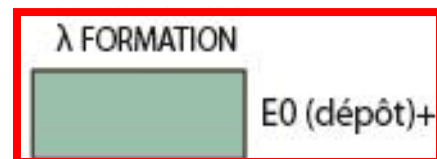
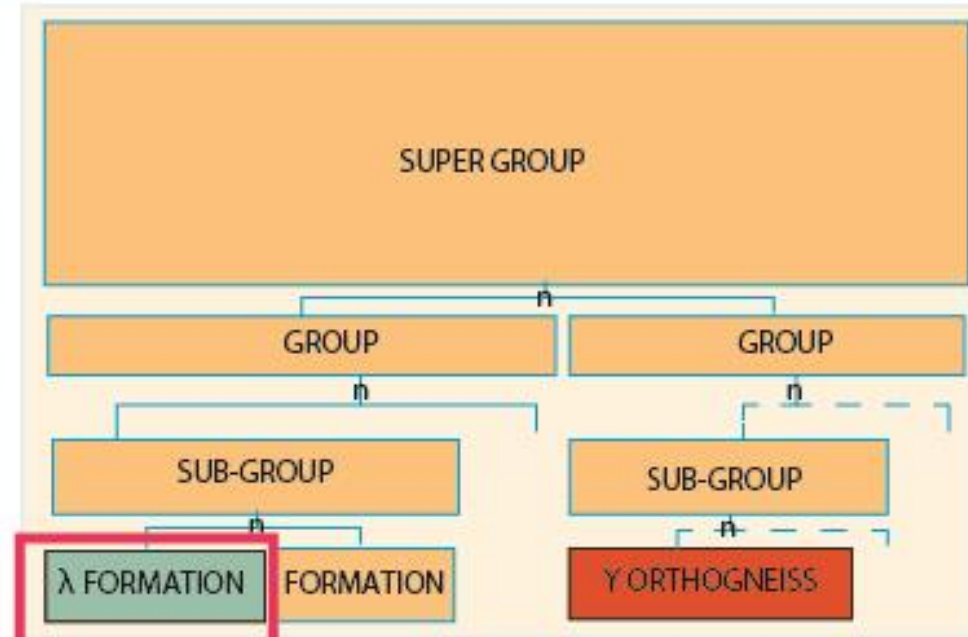
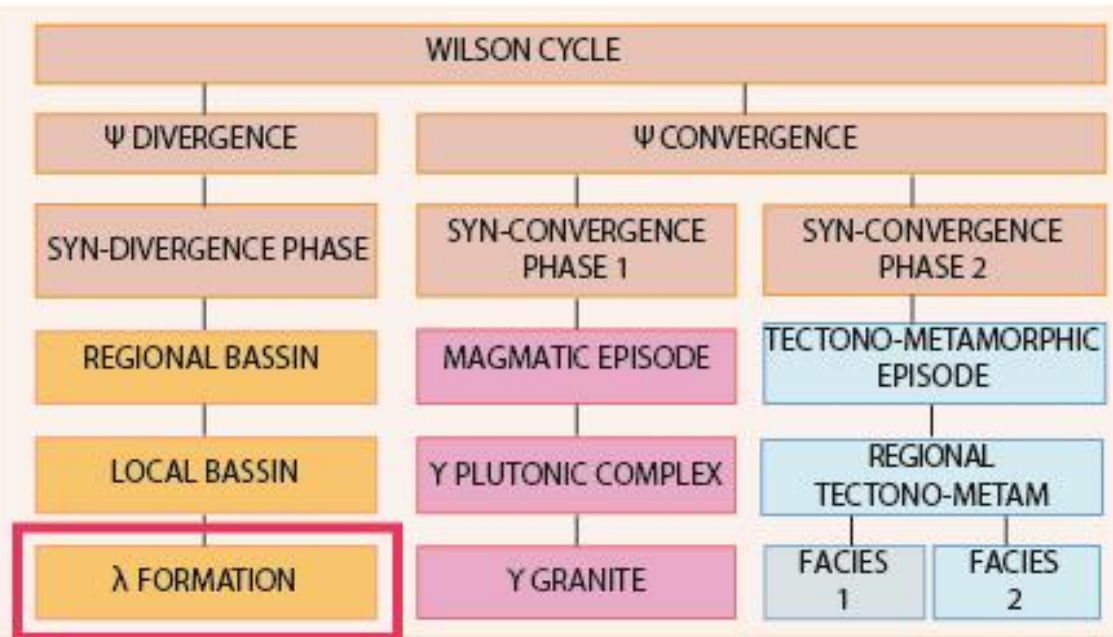
Y ORTHOGNEISS

- E0 (intrusion granite)+E1 (Métam. Régional)



EVENT

LITHOSTRATIGRAPHIC



E0 (dépôt)+E1 (Métam. Régional)



E0 (dépôt)+E1 (Métam. Régional) facies 2

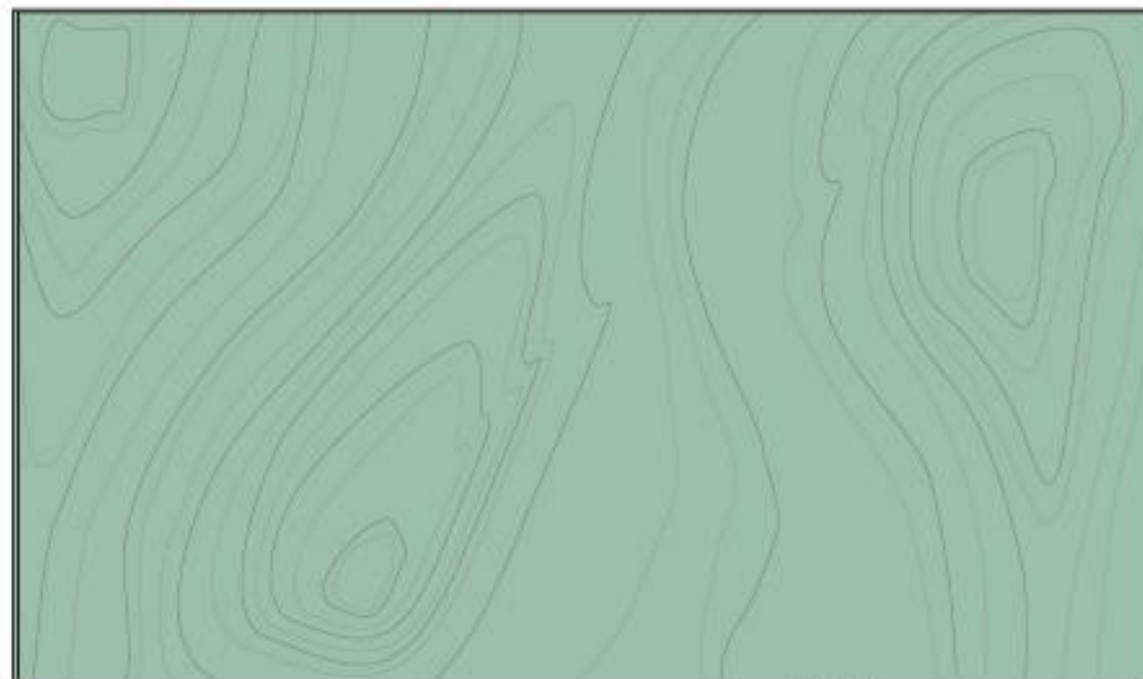


E0 (dépôt)+E1 (Métam. Régional) facies 1

Y ORTHOGNEISS

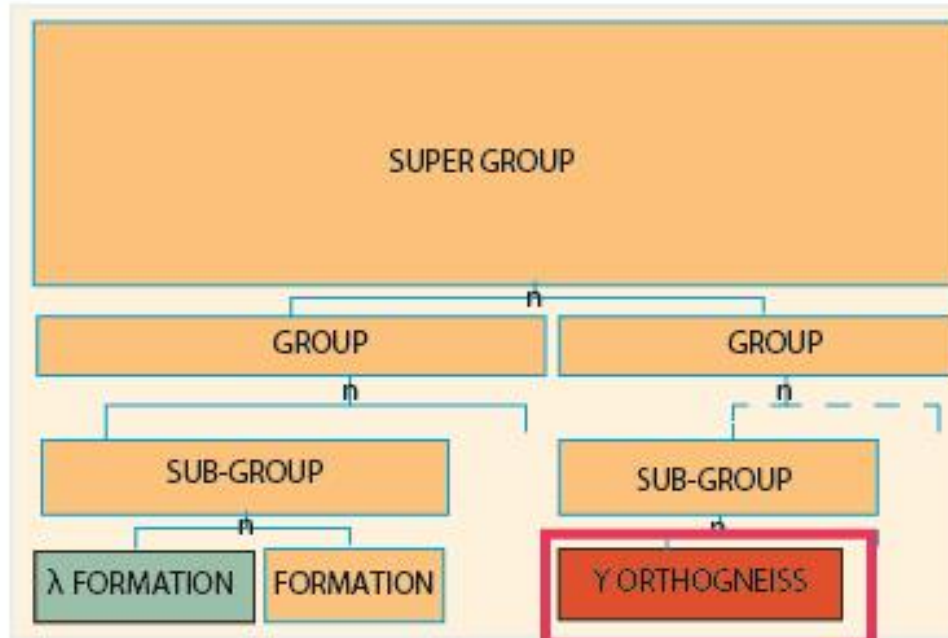
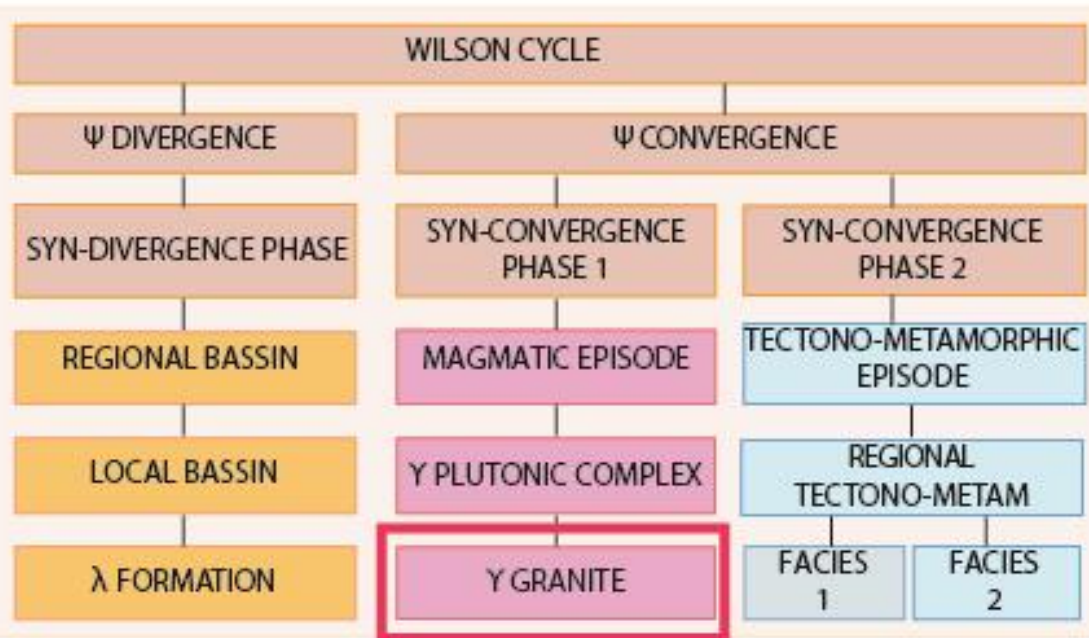


E0 (intrusion granite)+E1 (Métam. Régional)



EVENT

LITHOSTRATIGRAPHIC



λ FORMATION



E0 (dépôt)+E1 (Métam. Régional)



E0 (dépôt)+E1 (Métam. Régional) facies 2

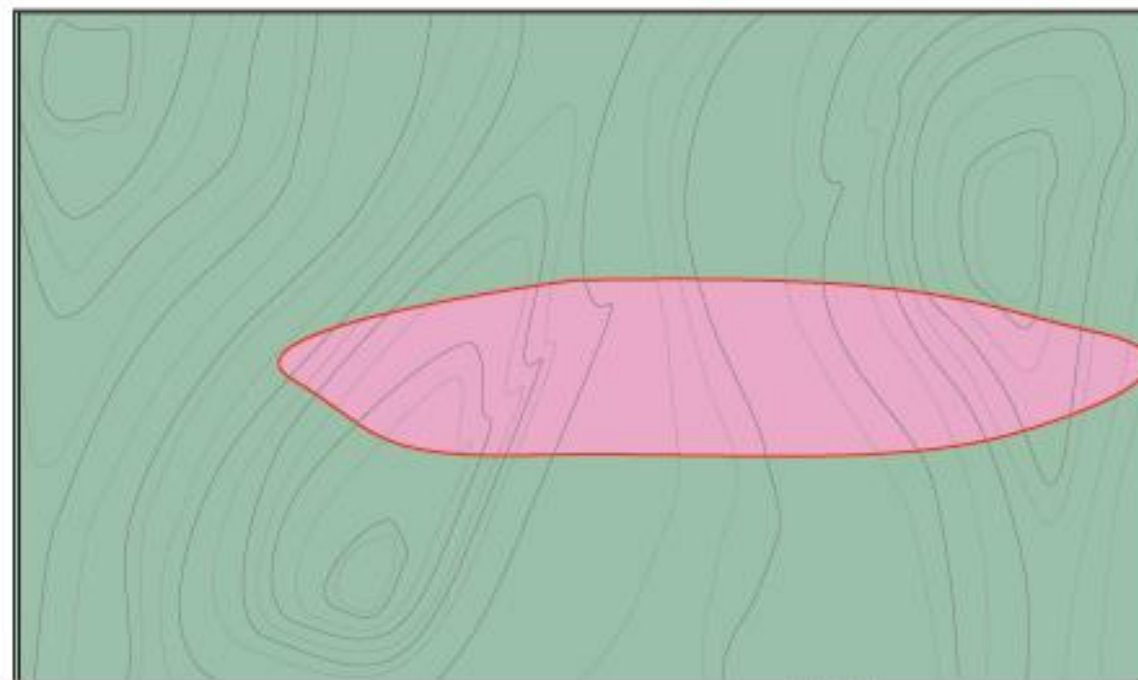


E0 (dépôt)+E1 (Métam. Régional) facies 1

ORTHOGNEISS

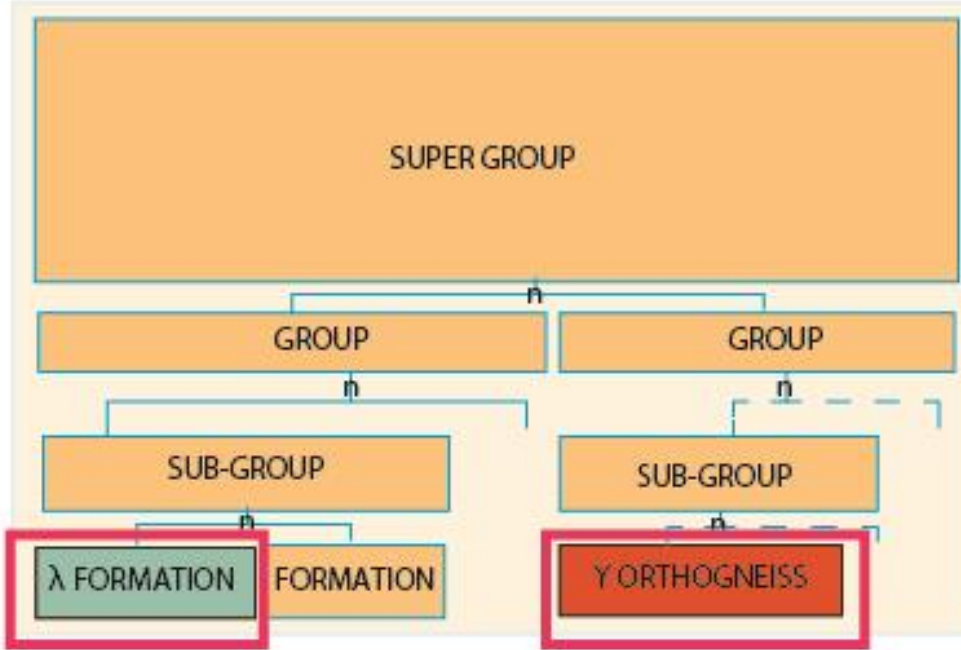
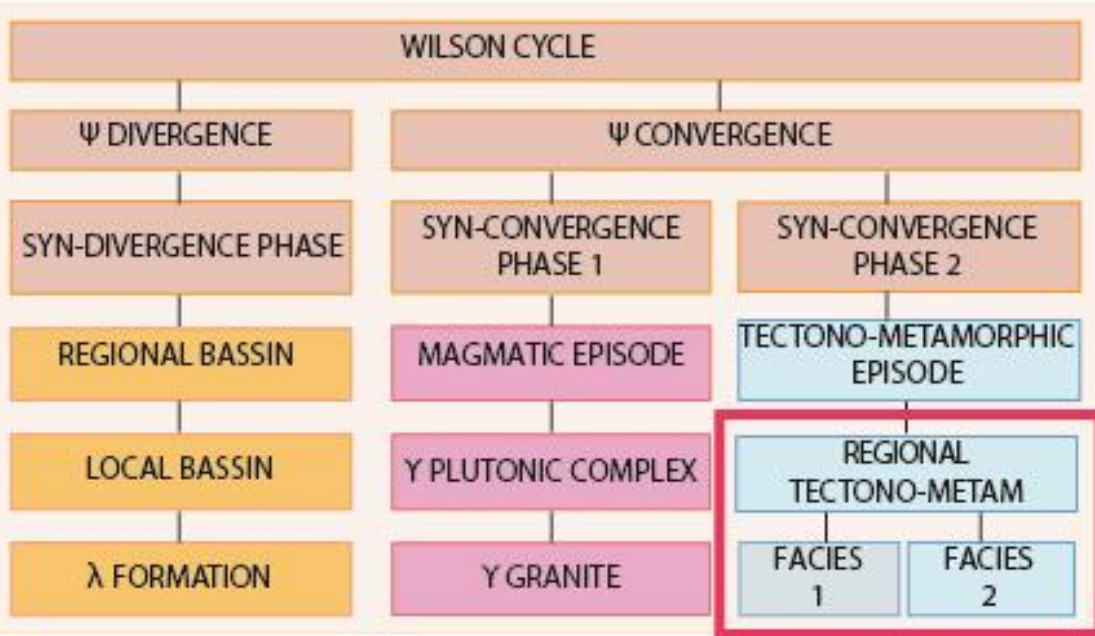


E0 (intrusion granite)+E1 (Métam. Régional)



EVENT

LITHOSTRATIGRAPHIC

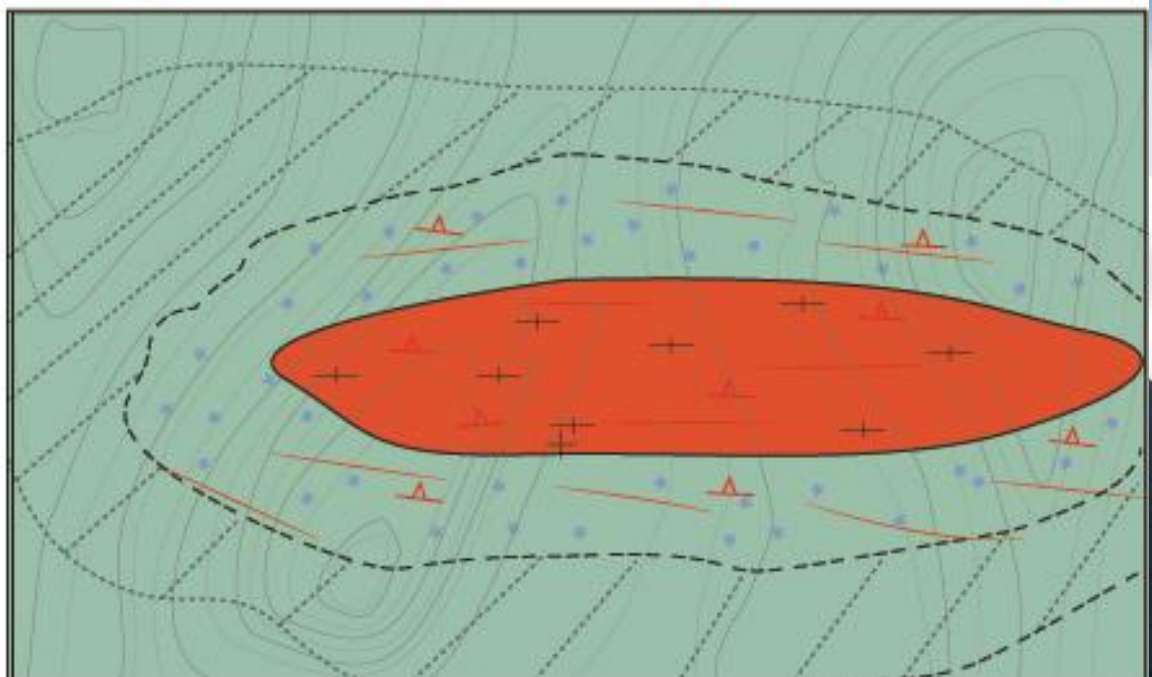


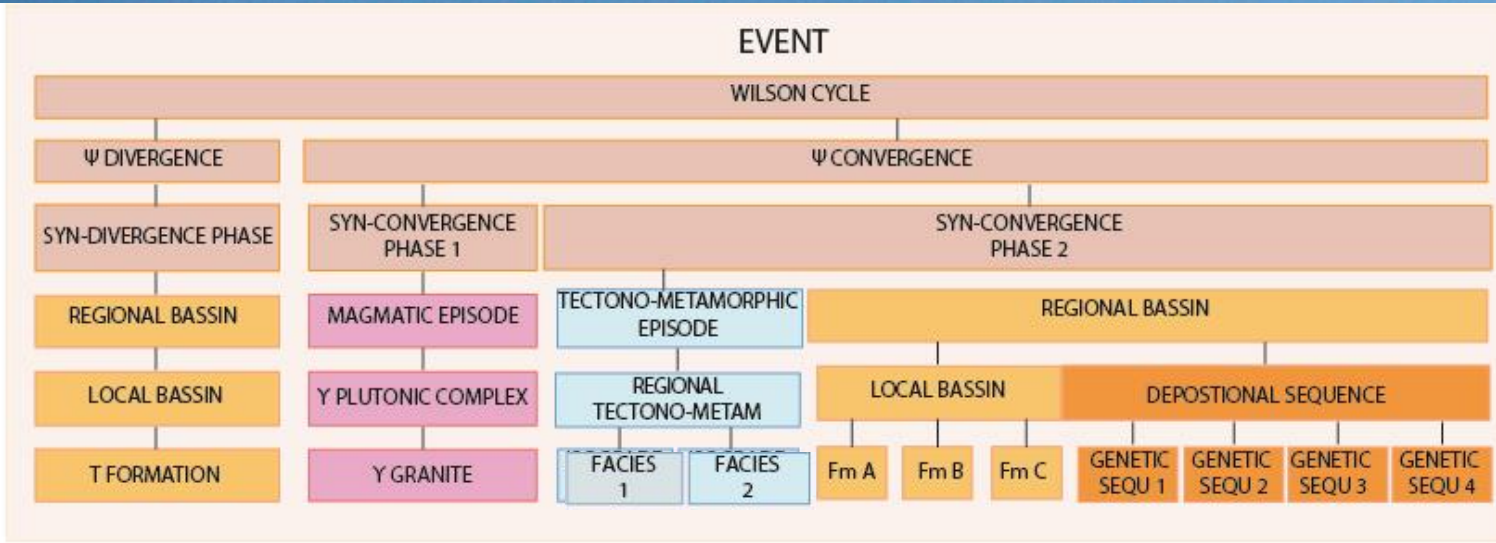
λ FORMATION

- E0 (dépôt)+E1 (Métam. Régional)
- E0 (dépôt)-E1 (Métam. Régional) facies 2
- E0 (dépôt)-E1 (Métam. Régional) facies 1

Y ORTHOGNEISS

- E0 (intrusion granite)+E1 (Métam. Régional)

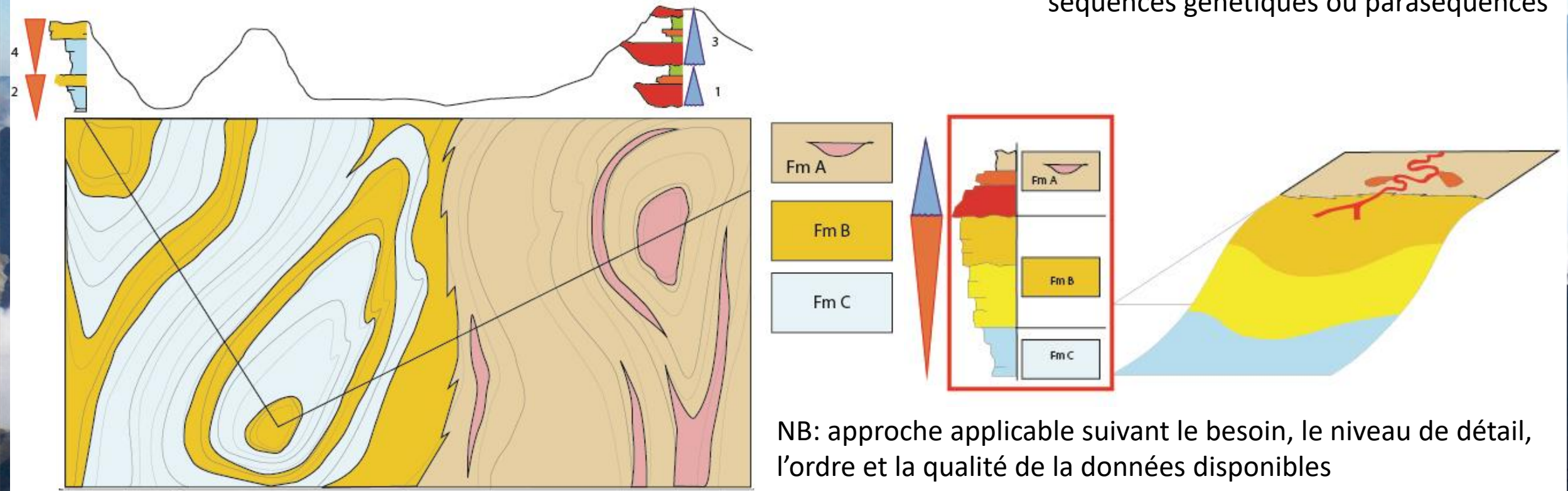




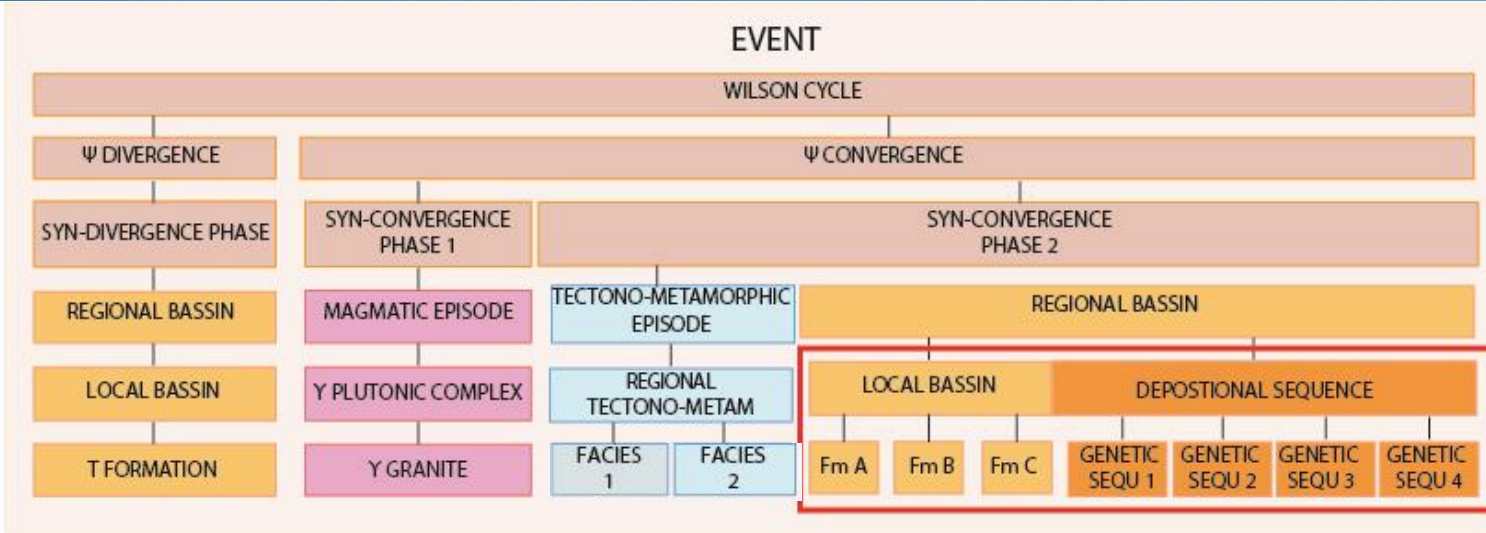
Exemple théorique d'application de la stratigraphie séquentielle dans l'approche évènementielle:

- 1) Log de terrain ou de données de forage
- 2) Faire correspondre les unités lithostratigraphiques de la carte avec les données des forages ou inversement
- 3) Grace à la stratigraphie séquentielle, et lorsque cela est possible on identifie les séquences génétiques ou paraséquences

Lithostratigraphic map



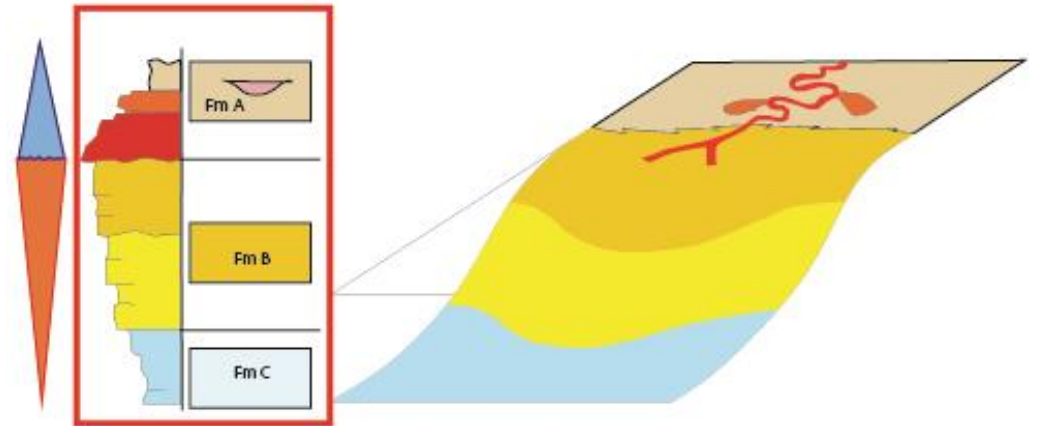
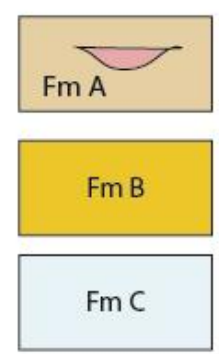
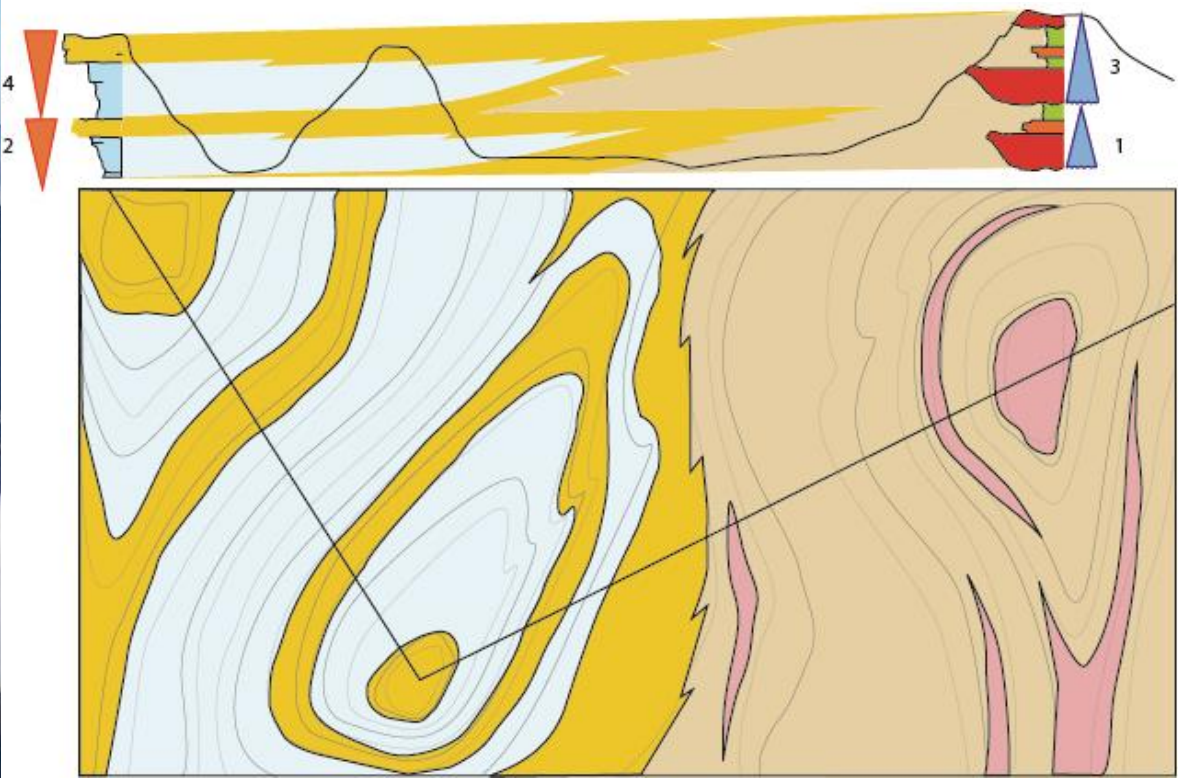
NB: approche applicable suivant le besoin, le niveau de détail, l'ordre et la qualité de la données disponibles



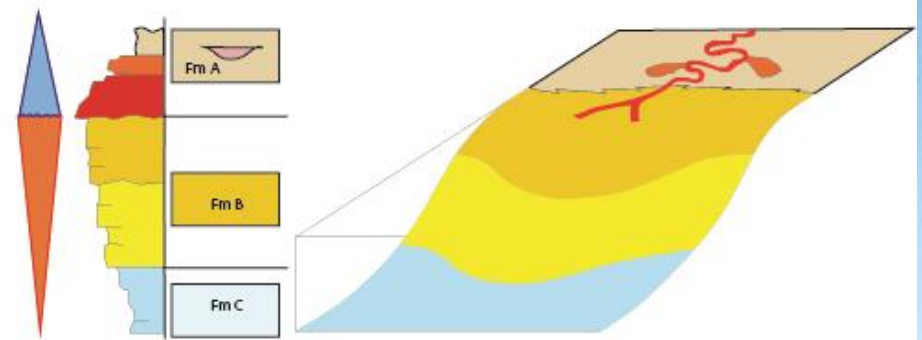
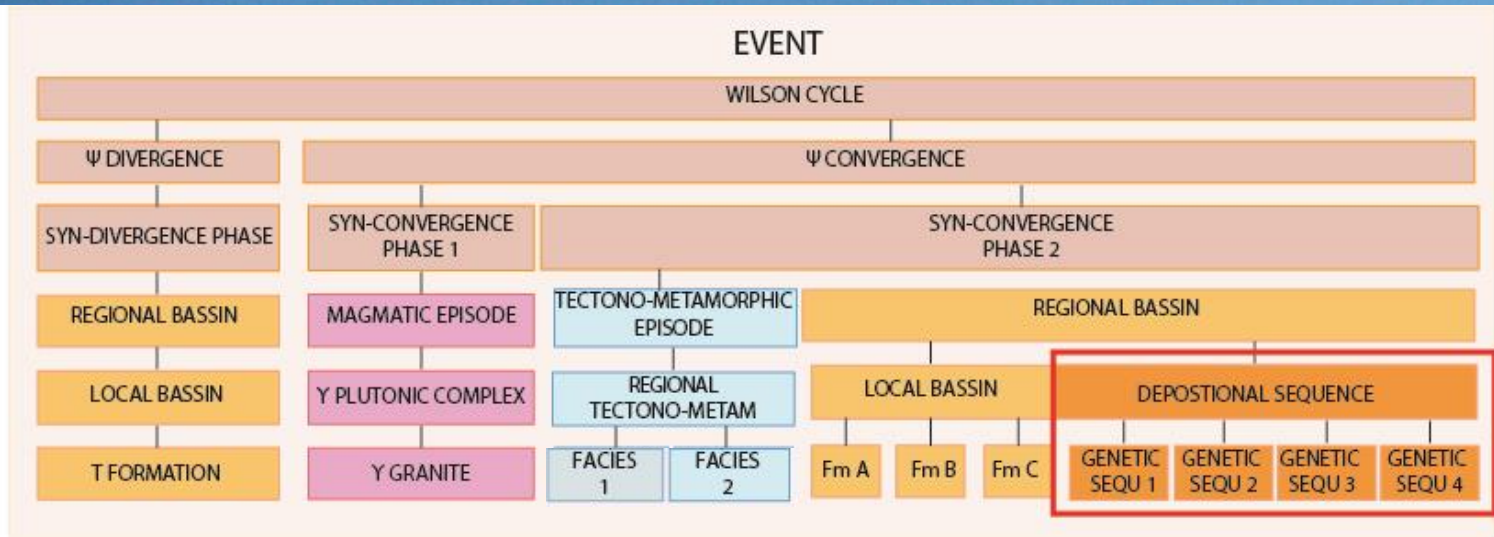
Exemple théorique d'application de la stratigraphie séquentielle dans l'approche évènementielle:

- 1) Log de terrain ou de données de forage
- 2) Faire correspondre les unités lithostratigraphiques de la carte avec les données des forages ou inversement
- 3) Grace à la stratigraphie séquentielle, et lorsque cela est possible on identifie les séquences génétiques ou paraséquences

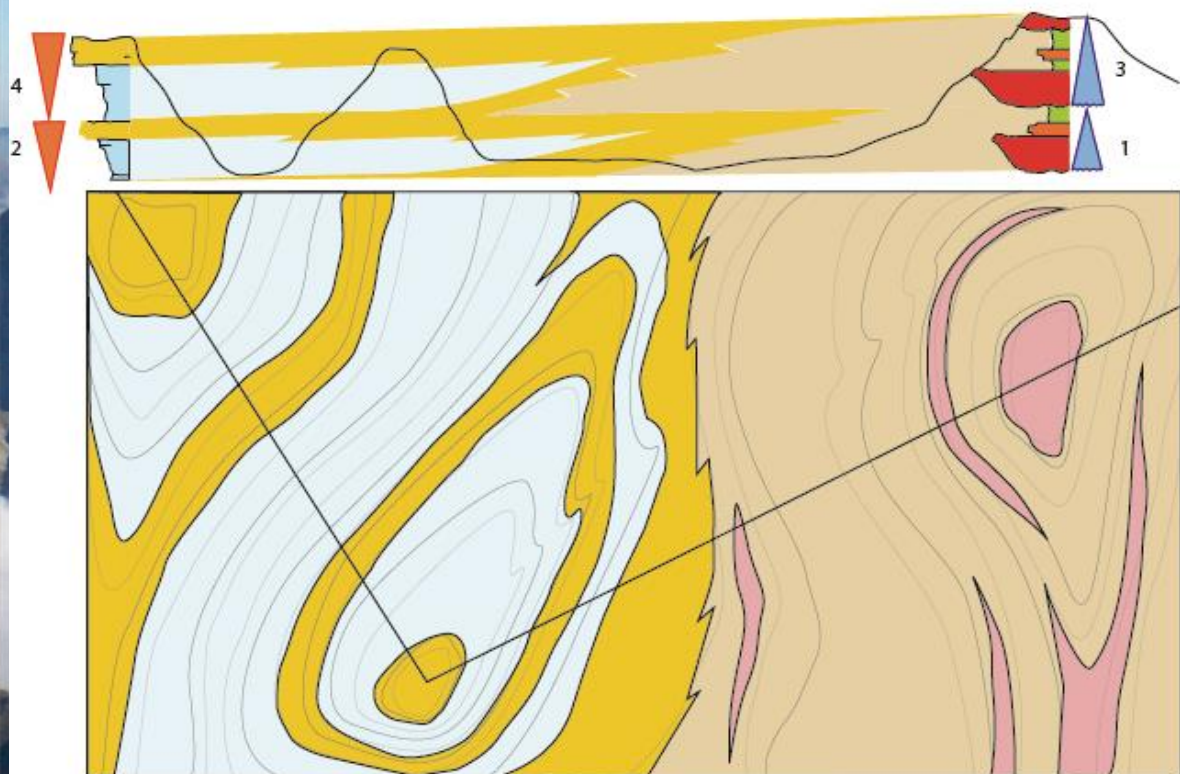
Lithostratigraphic map



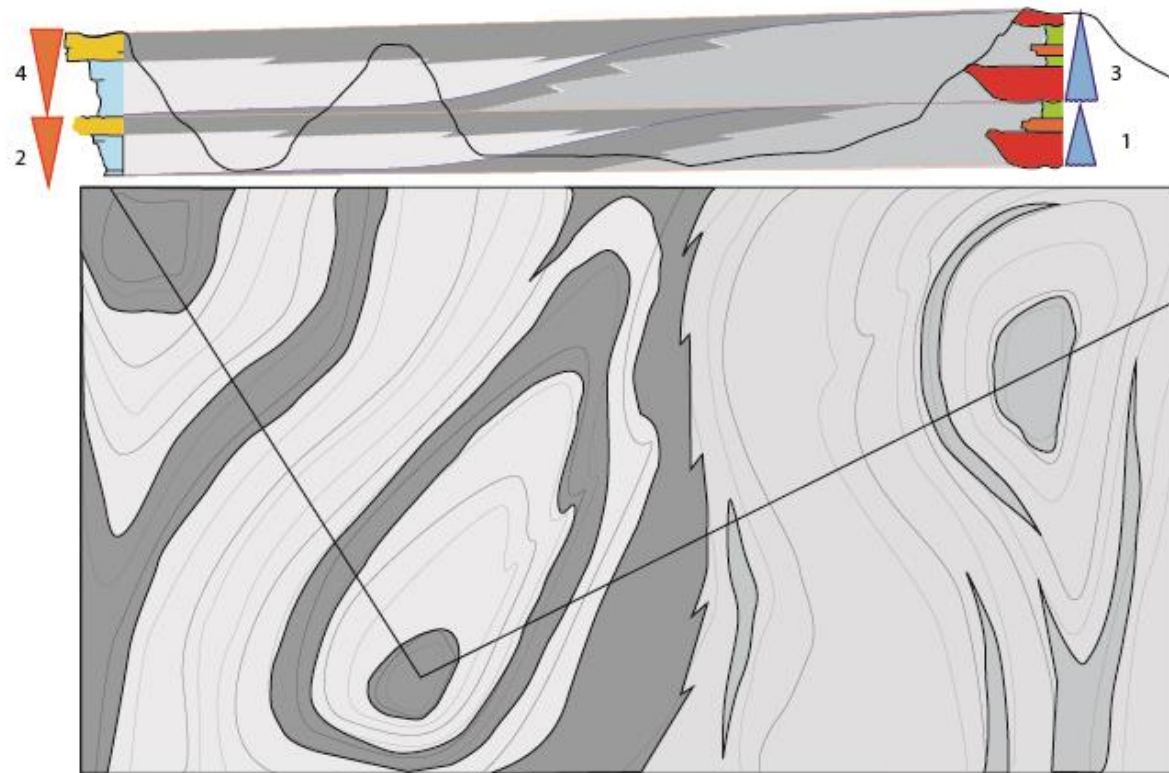
NB: approche applicable suivant le besoin, le niveau de détail, l'ordre et la qualité de la données disponibles



Lithostratigraphic map

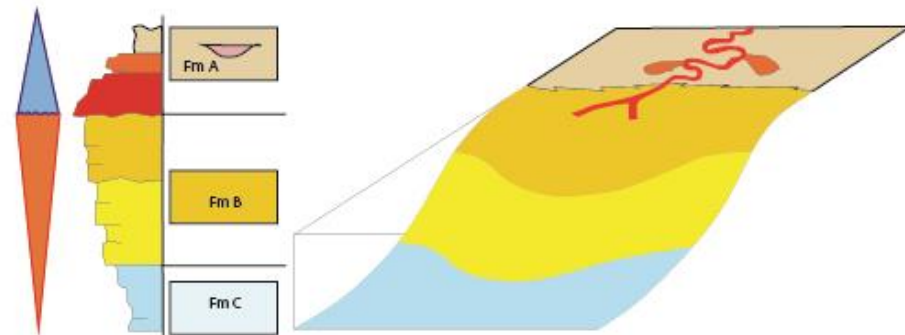
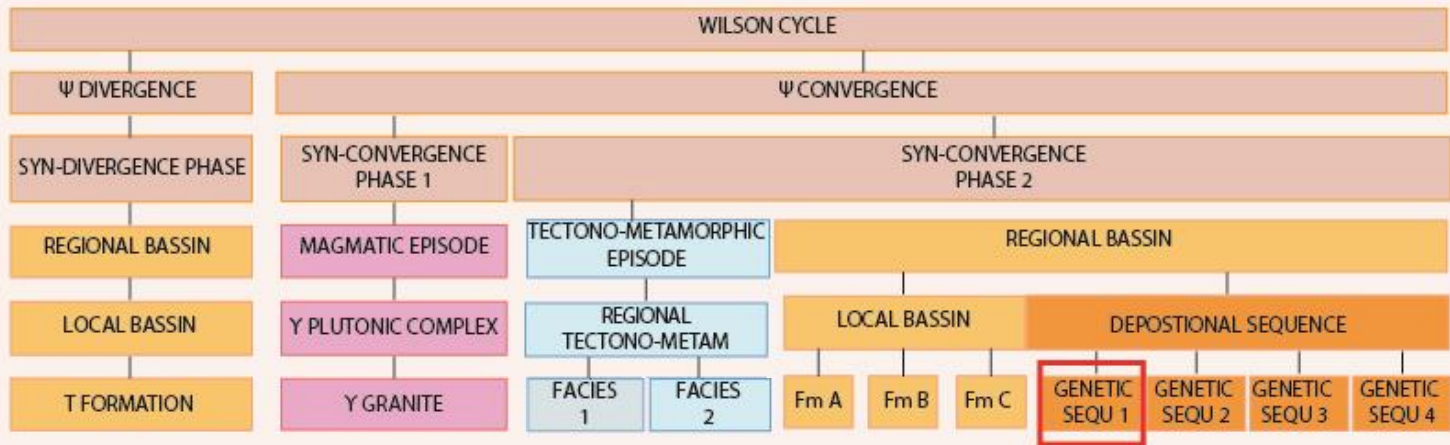


Event map

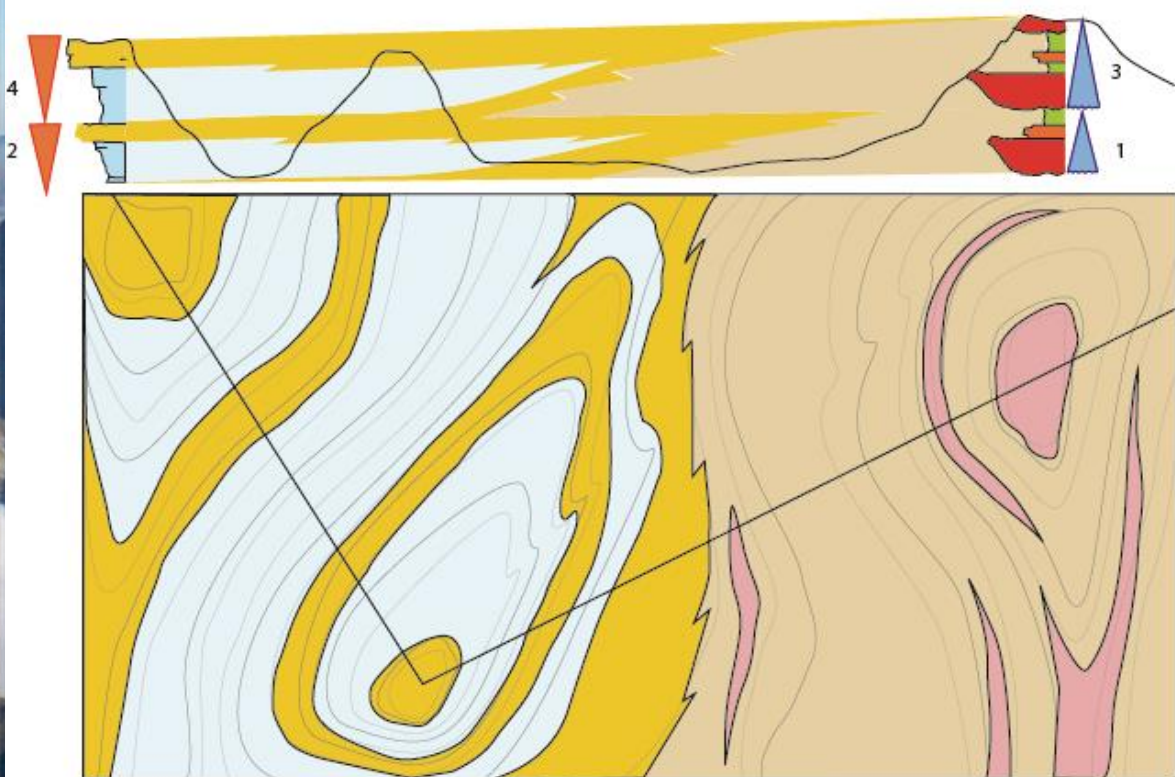


EVENT

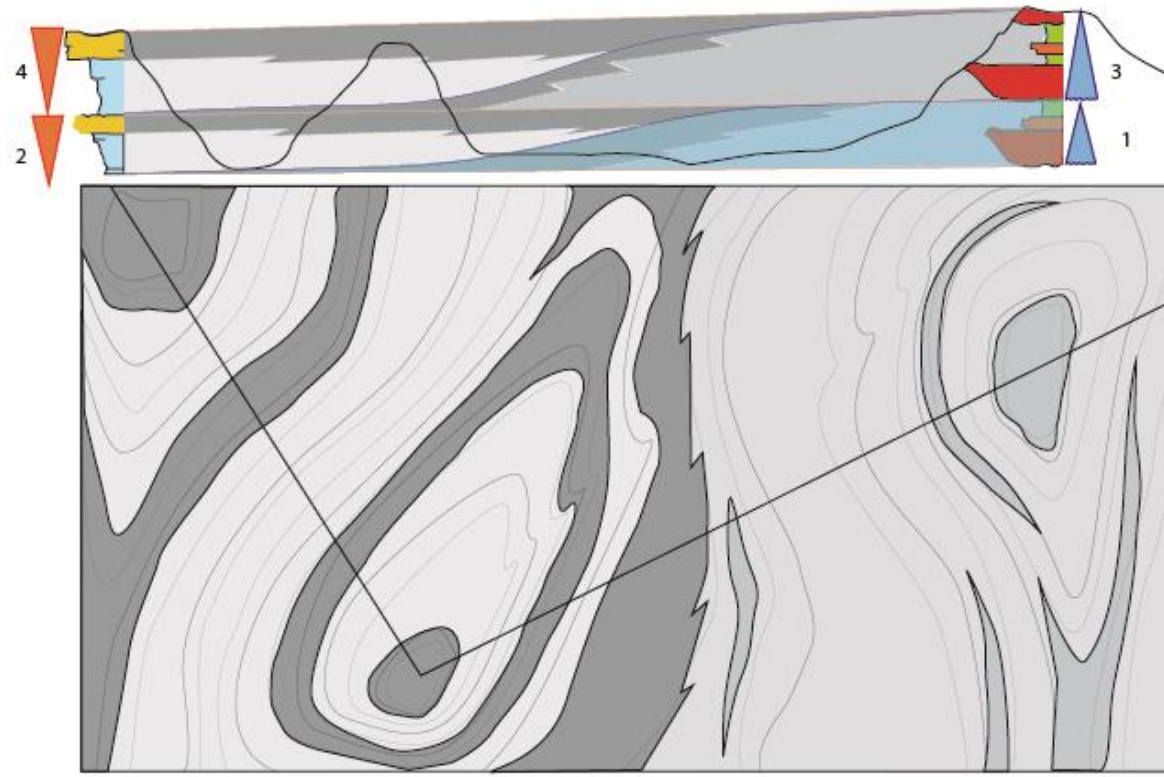
WILSON CYCLE



Lithostratigraphic map

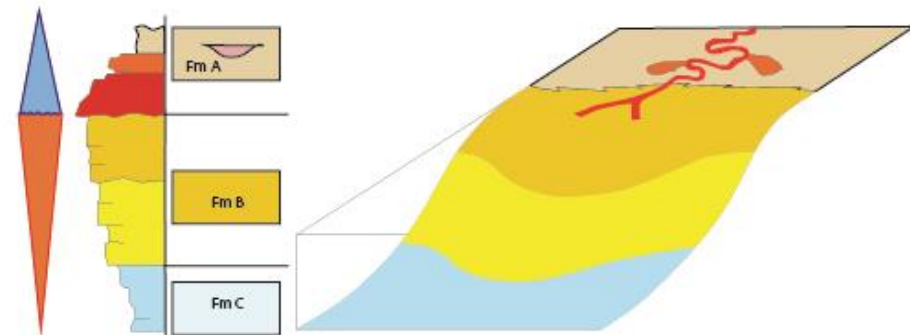
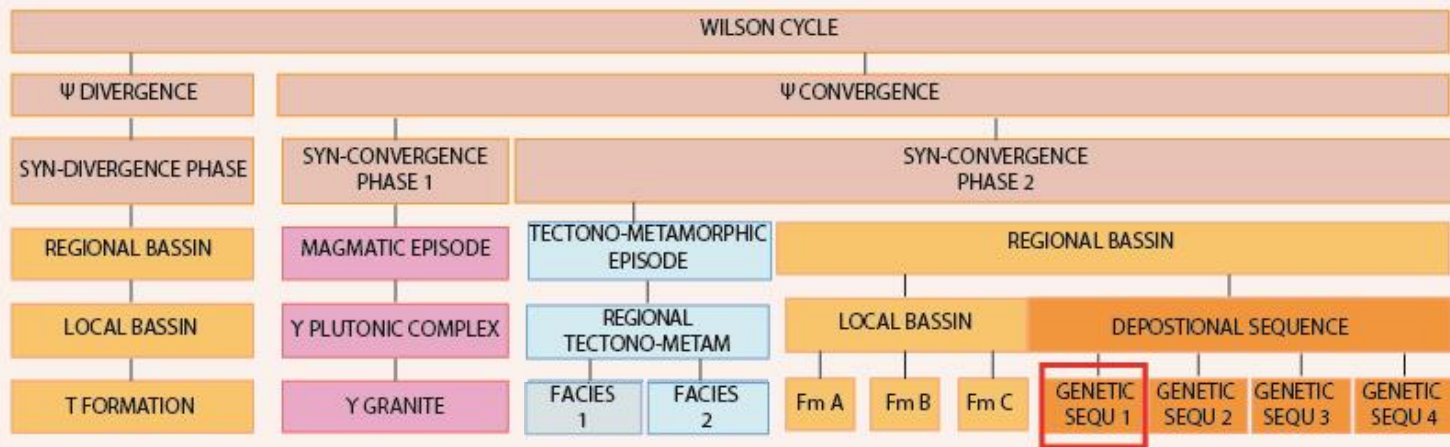


Event map

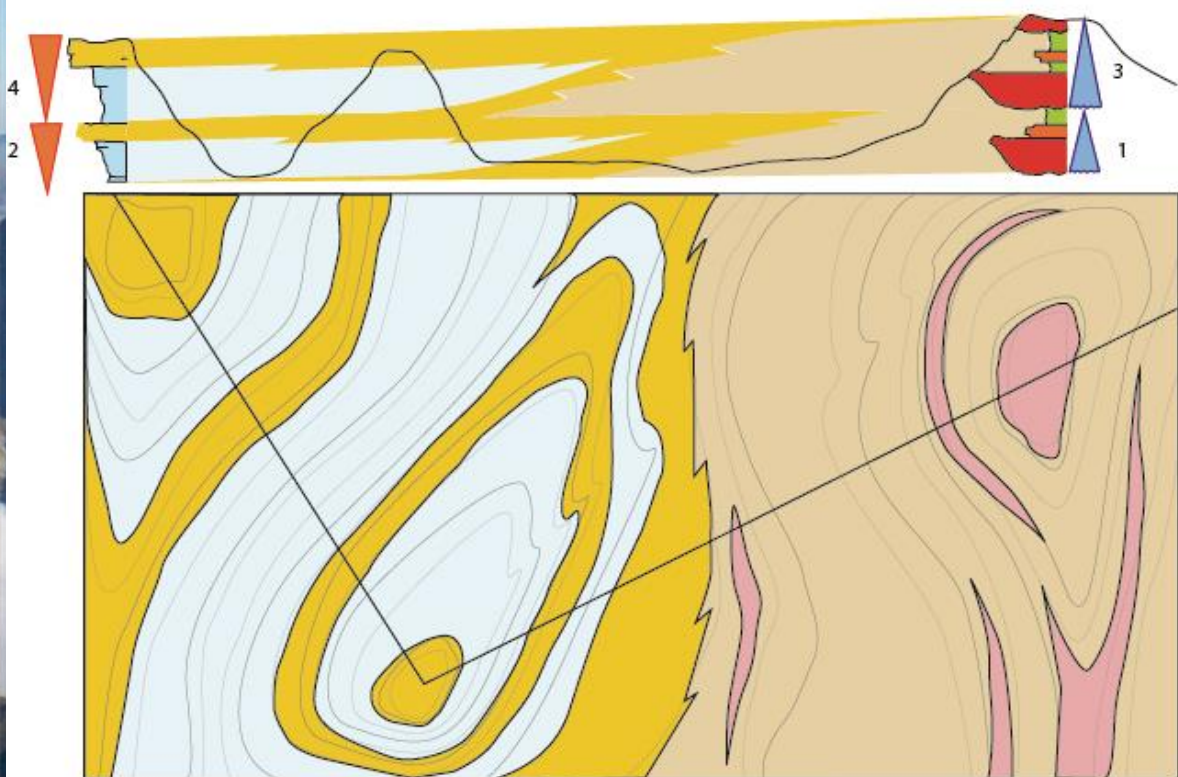


EVENT

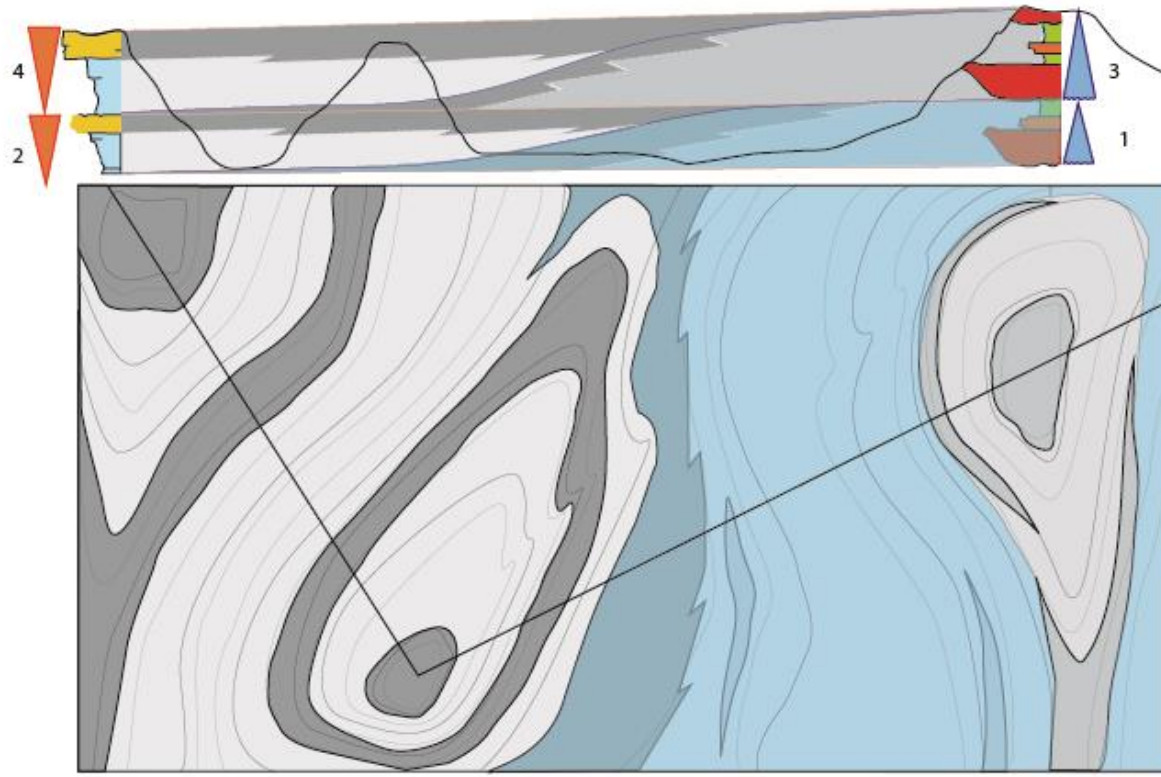
WILSON CYCLE

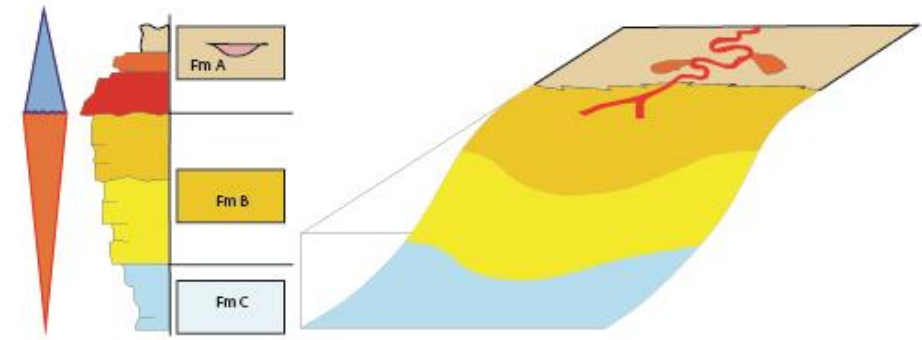
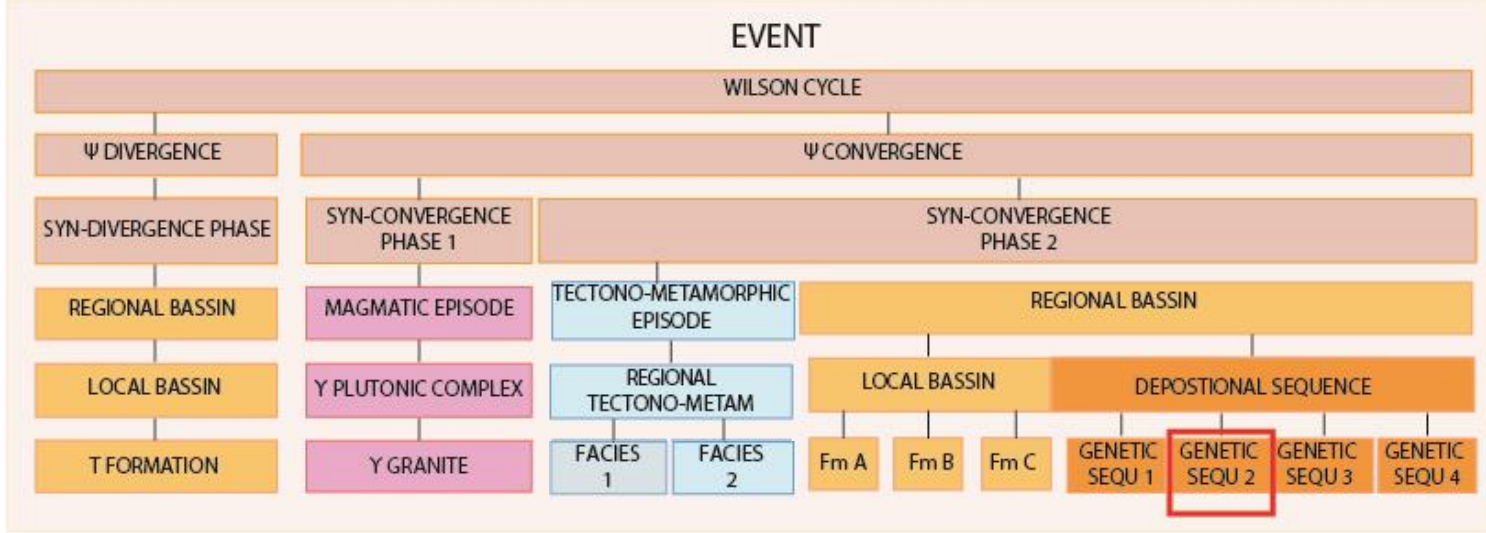


Lithostratigraphic map



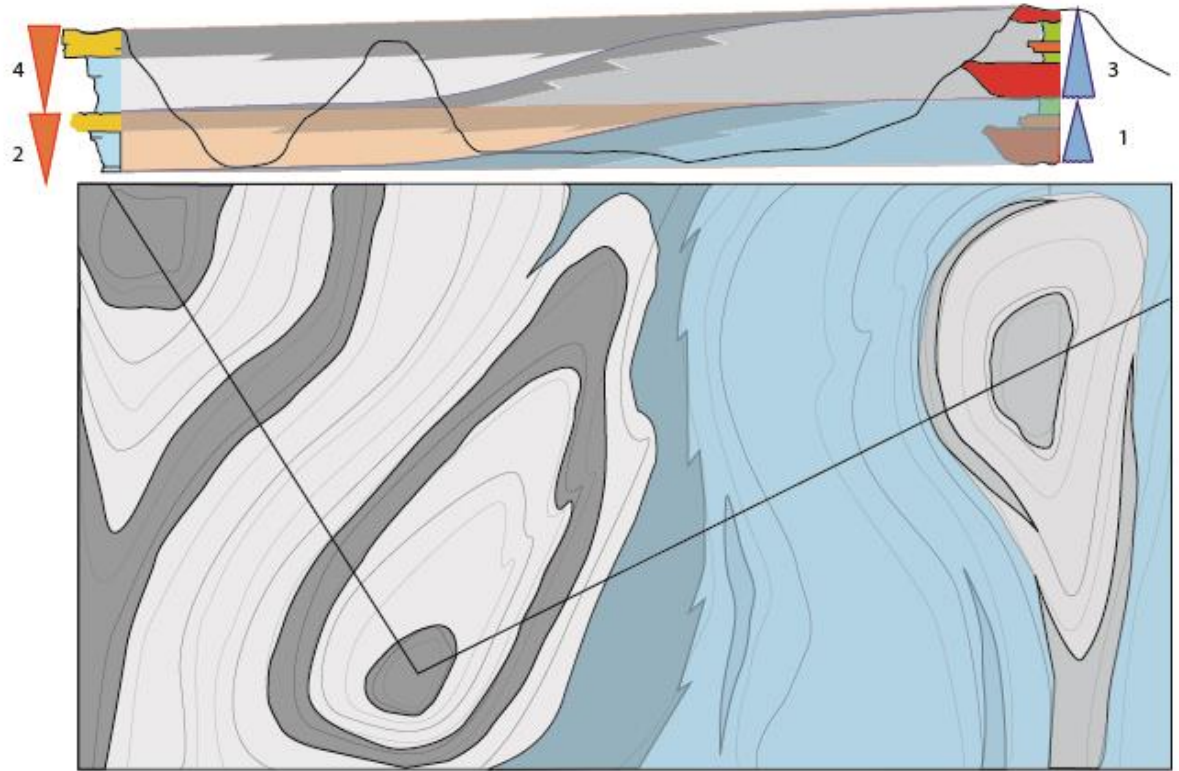
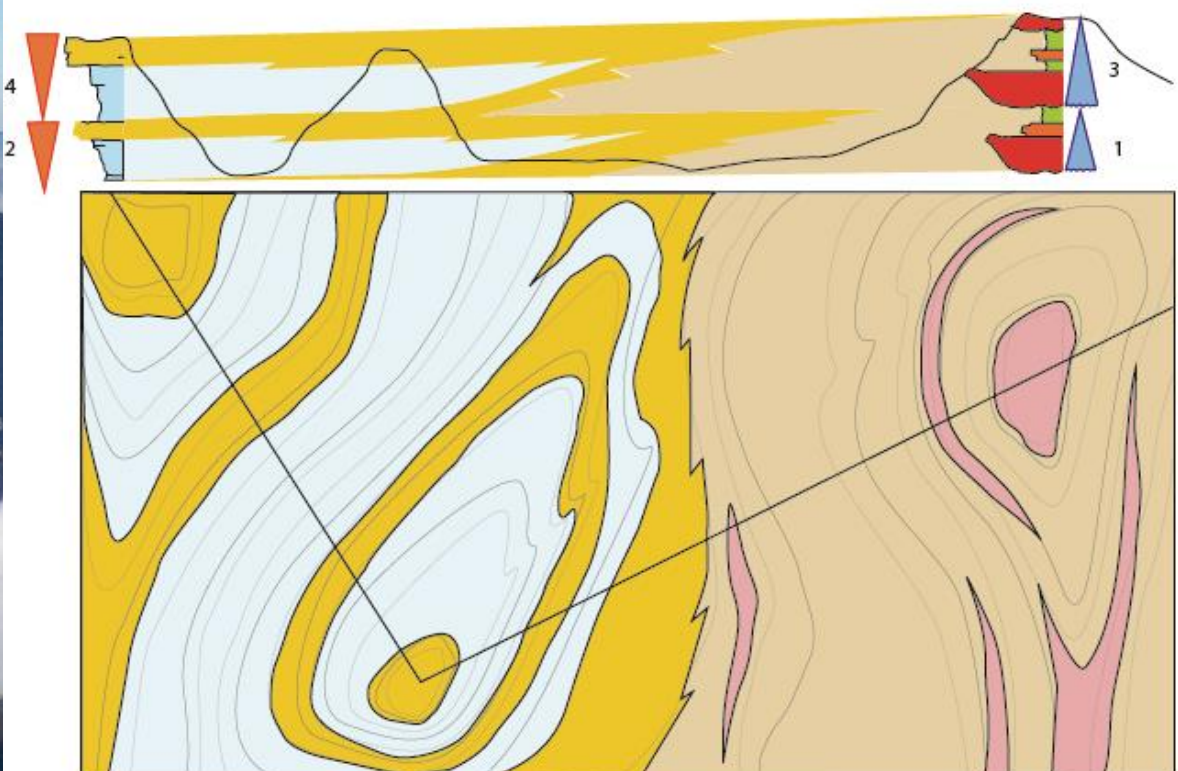
Event map

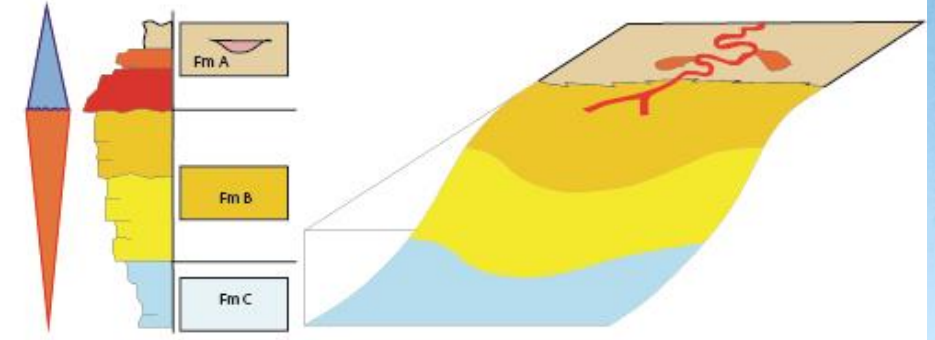
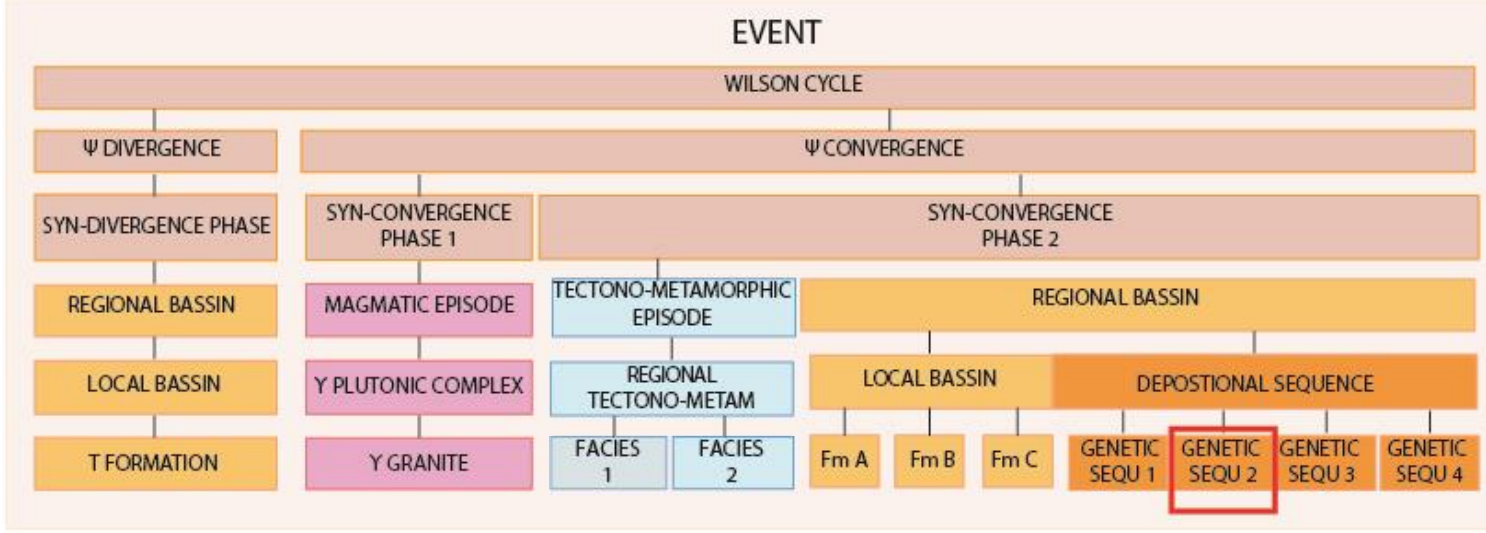




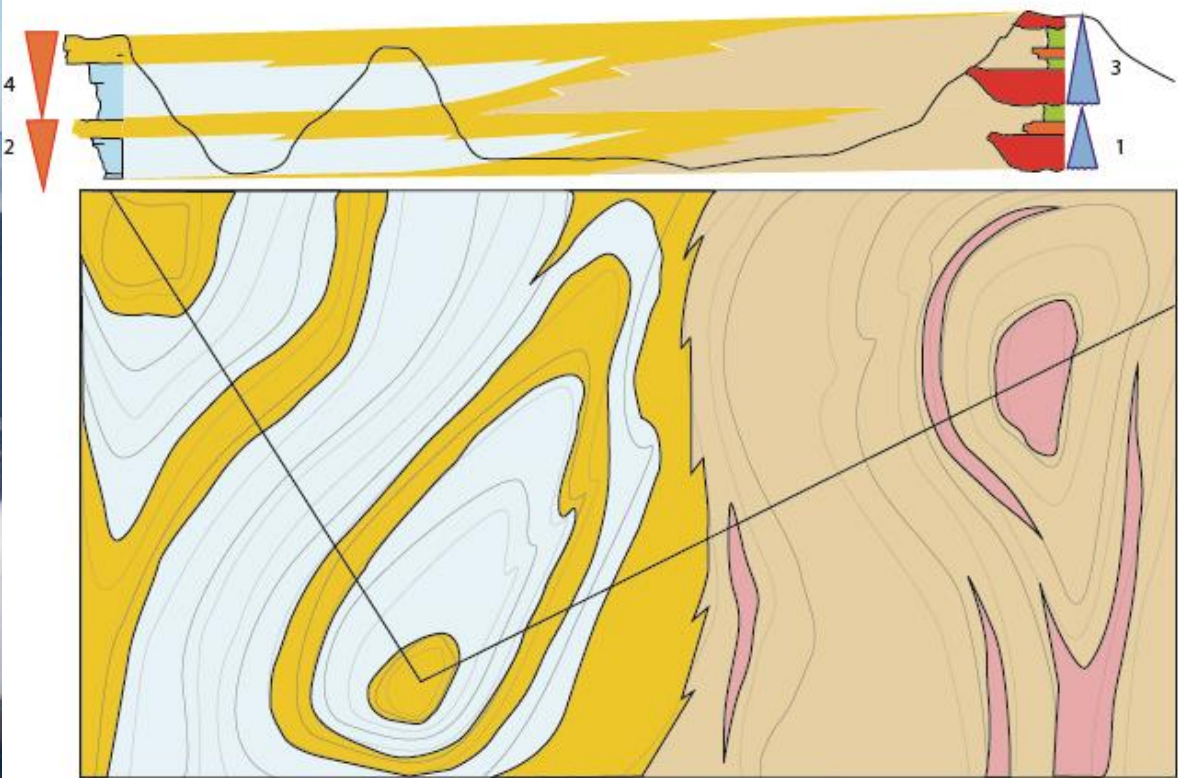
Lithostratigraphic map

Event map

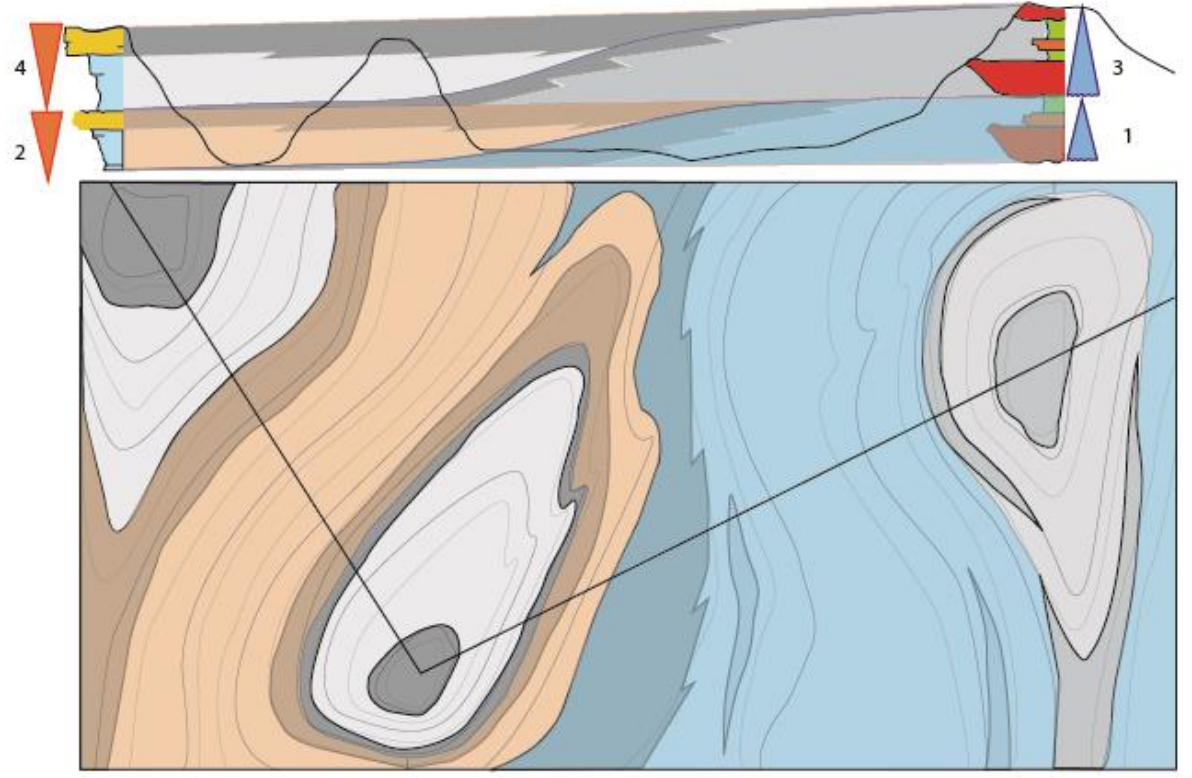




Lithostratigraphic map

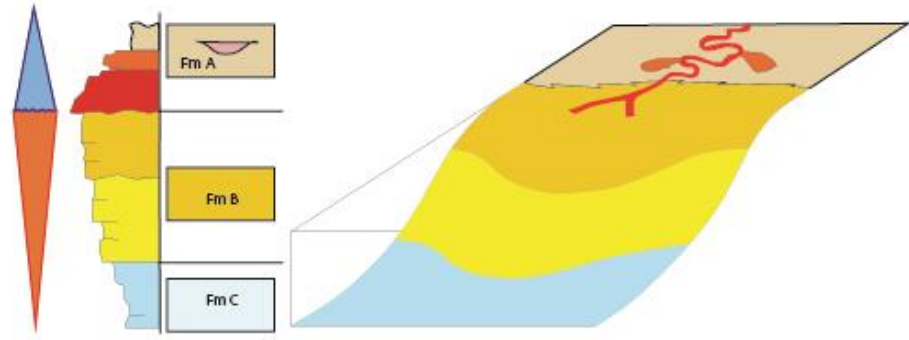
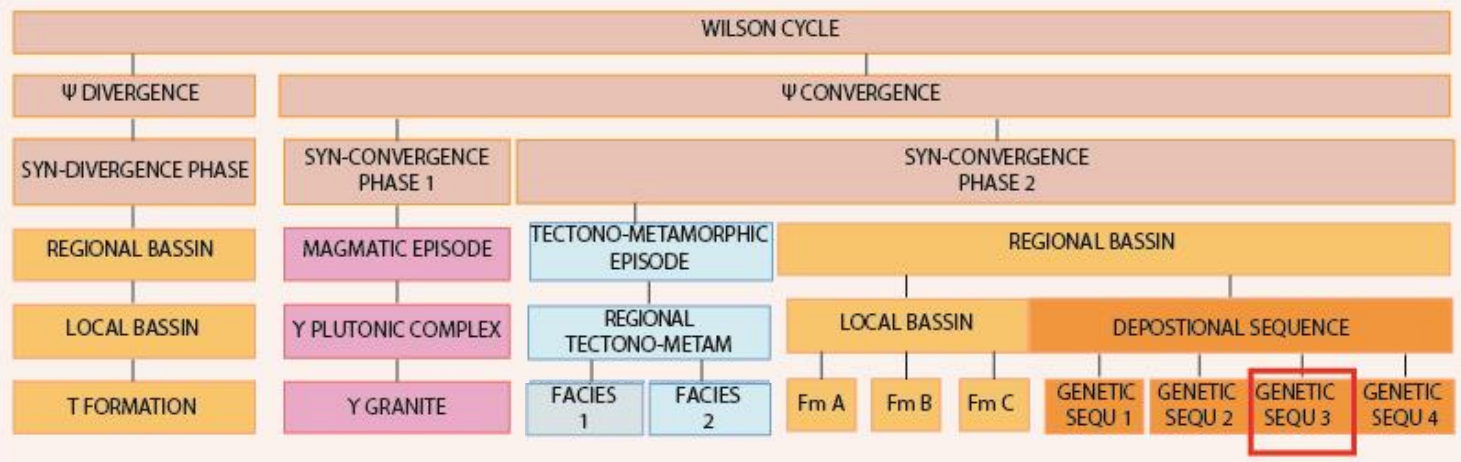


Event map

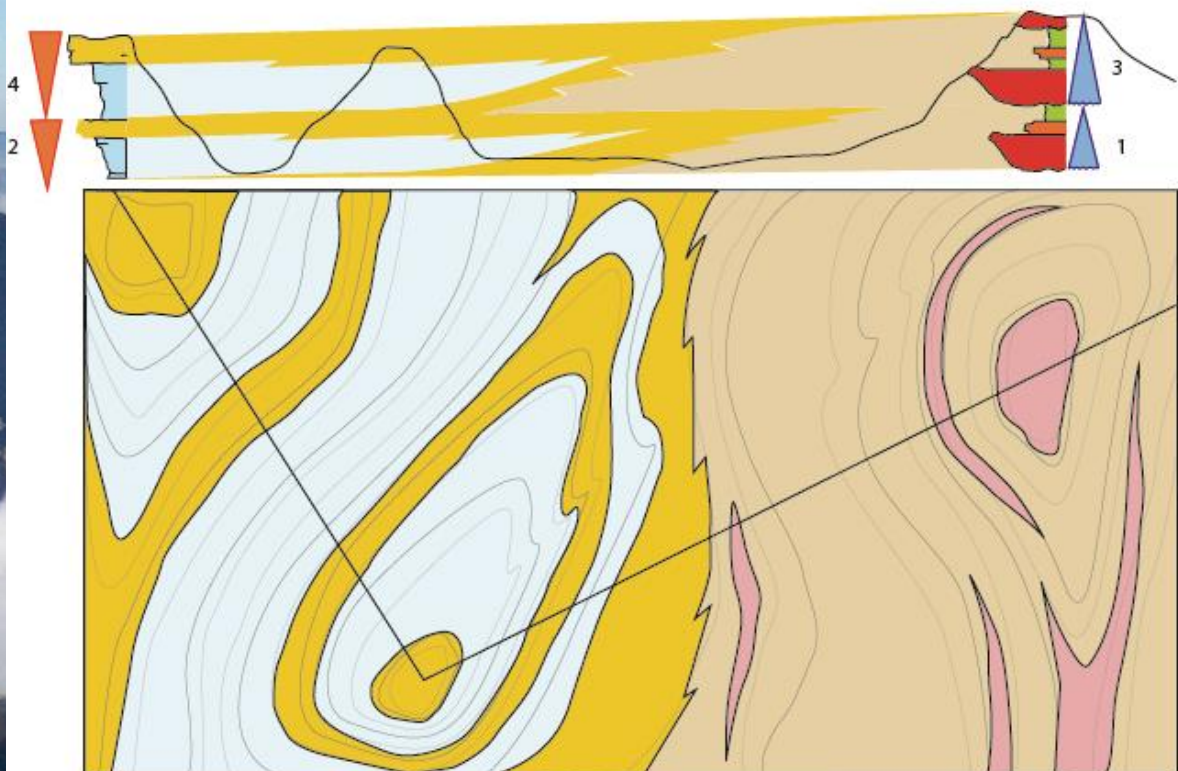


EVENT

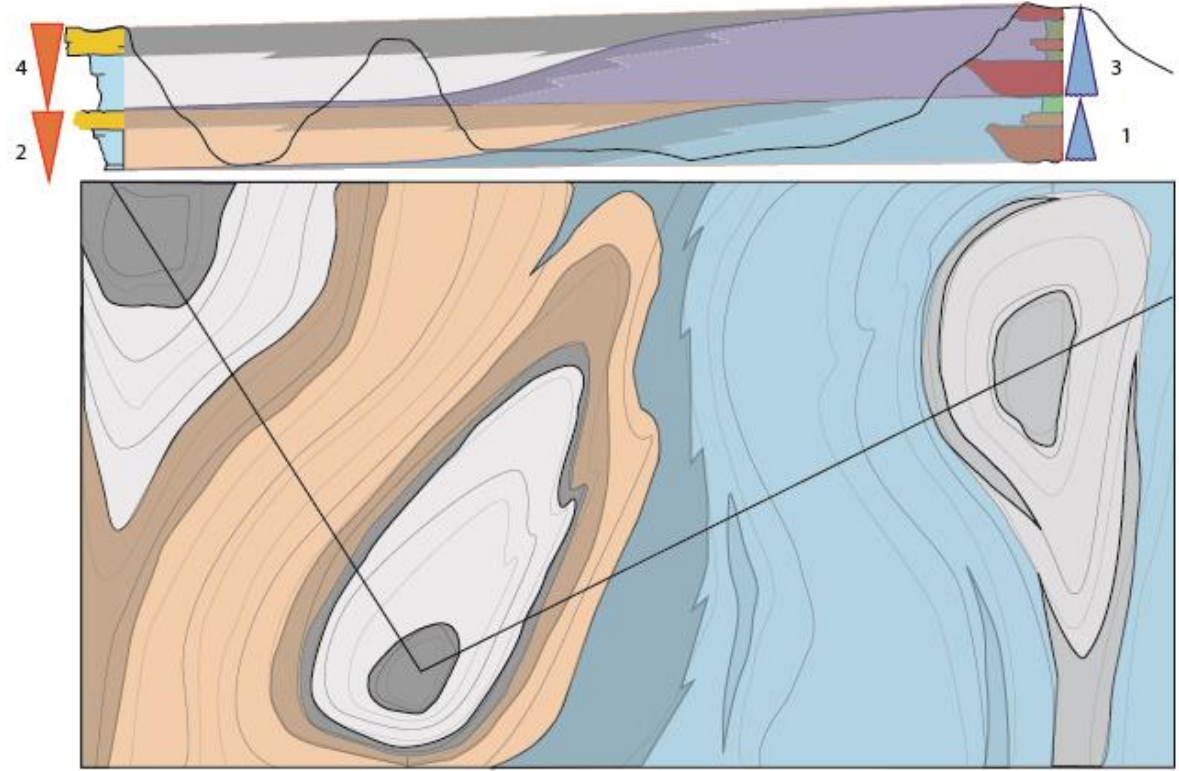
WILSON CYCLE

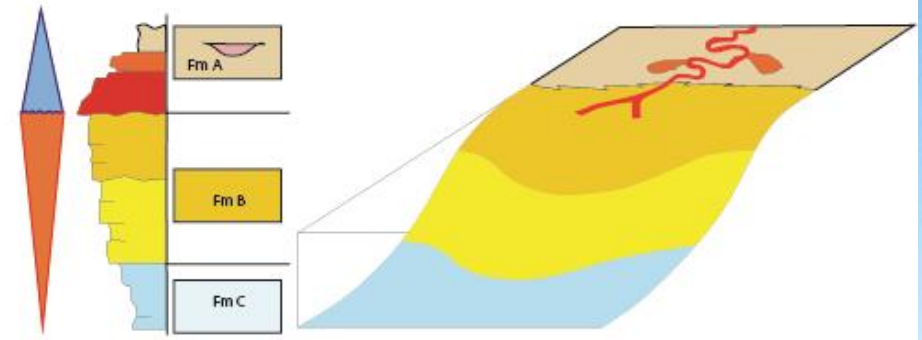
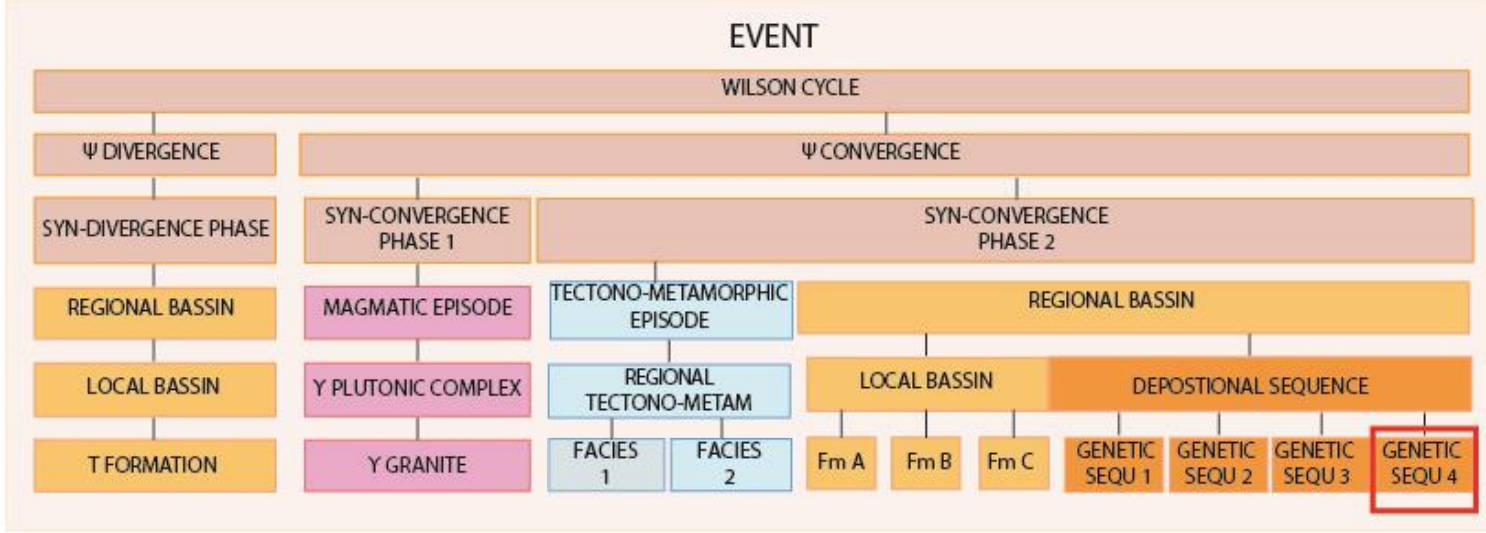


Lithostratigraphic map

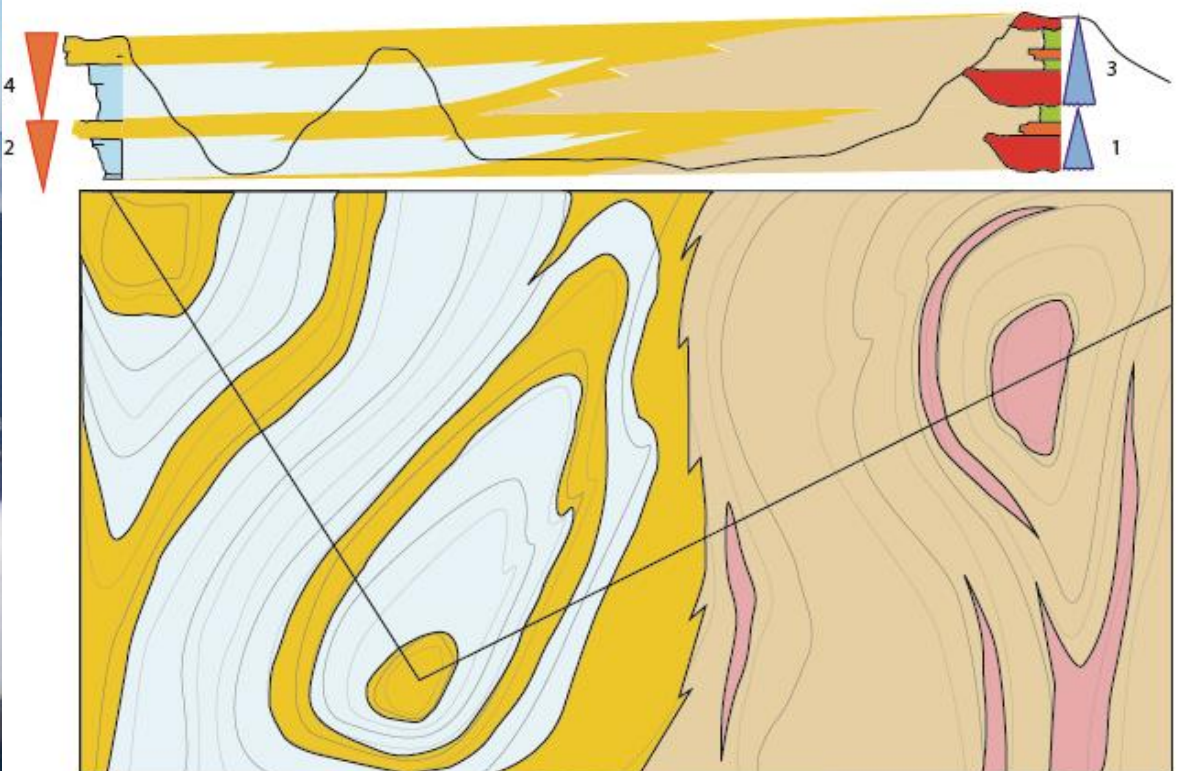


Event map

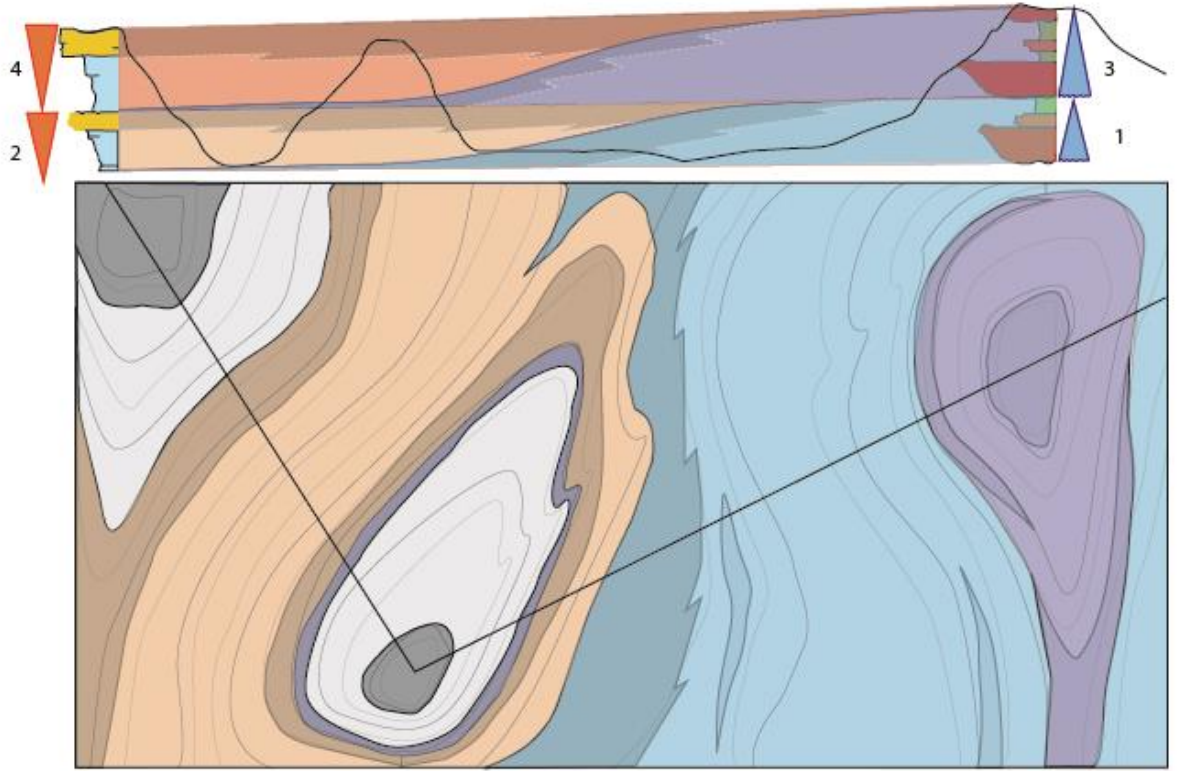


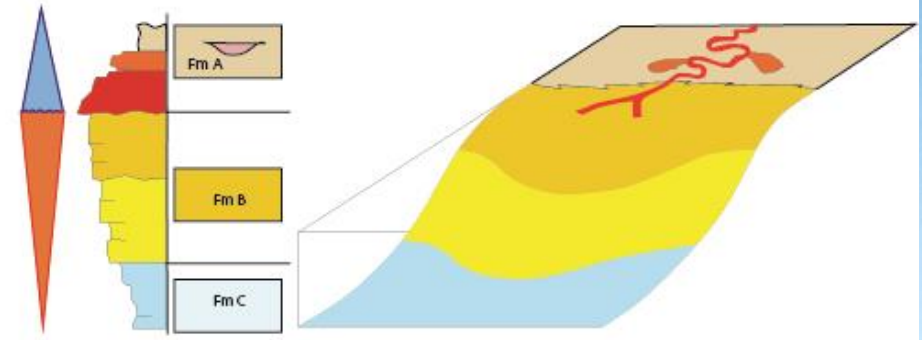
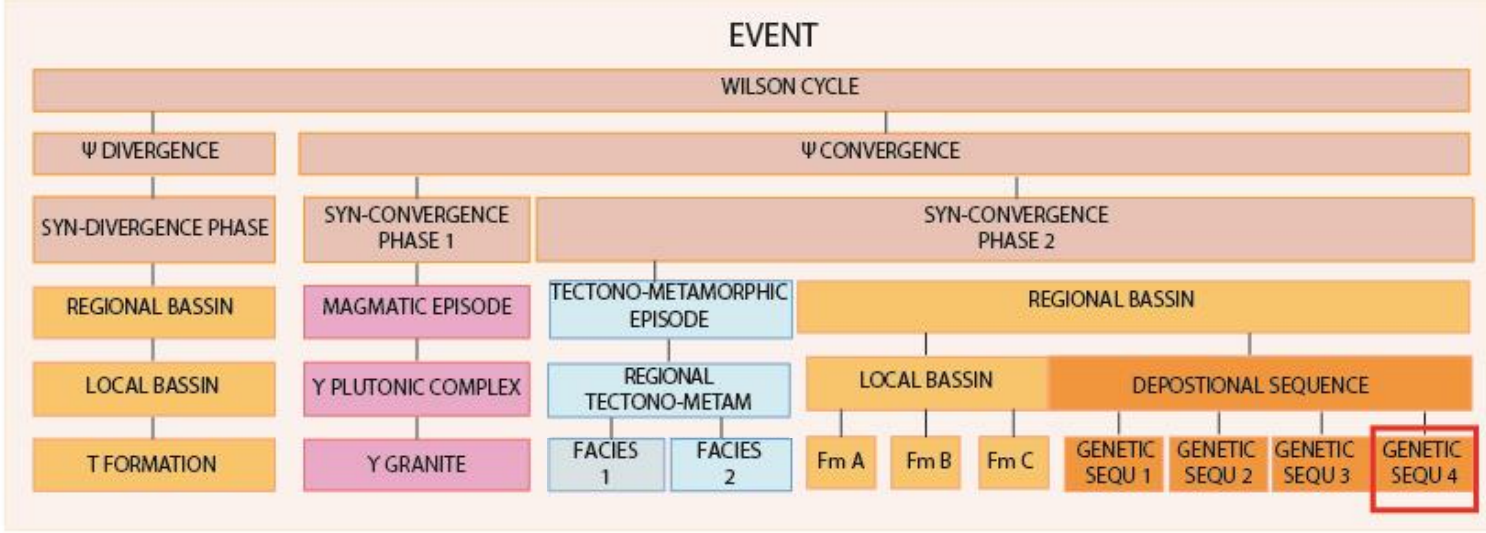


Lithostratigraphic map

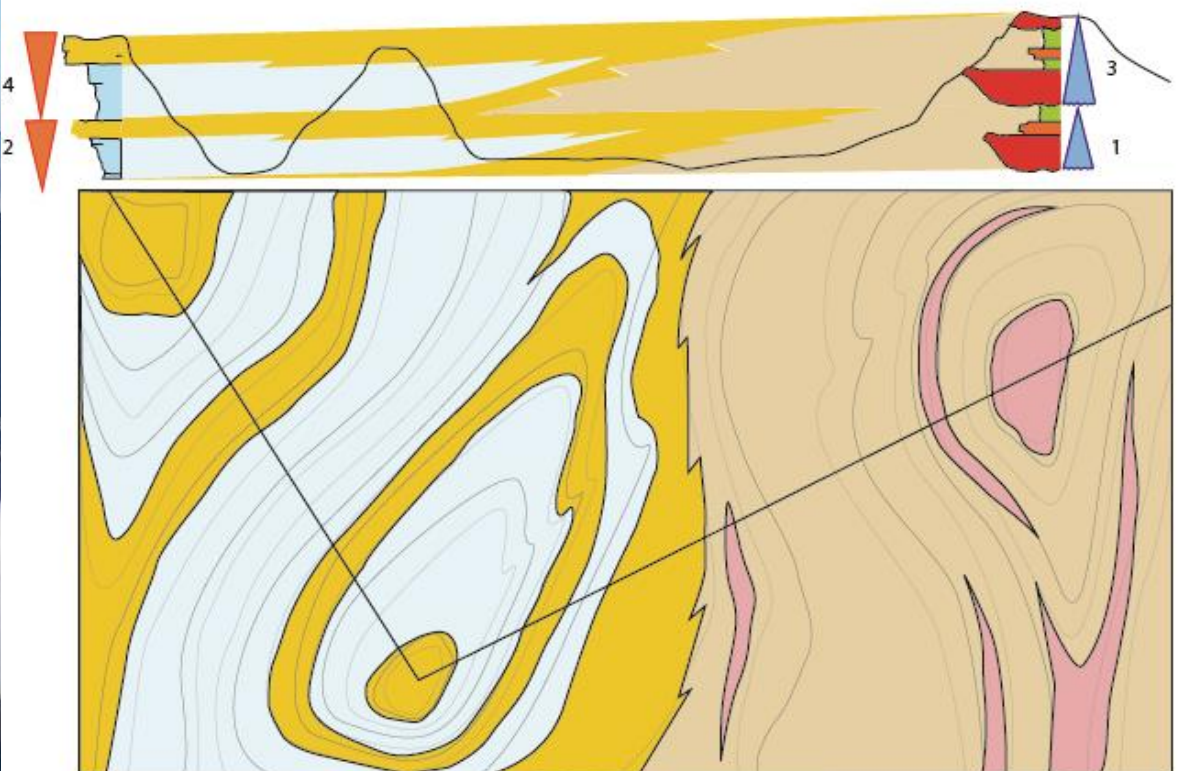


Event map





Lithostratigraphic map



Event map

